



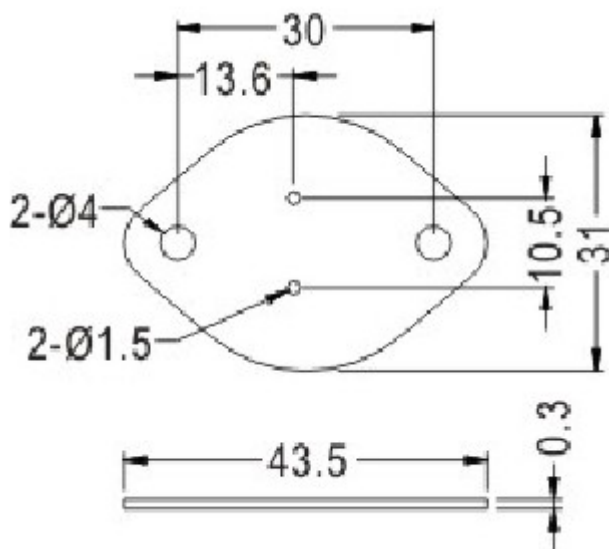
硅胶片

PART NO: TO3-1

- ◆ MATERIAL: SILICON (UL)
- ◆ FLAME CLASS: 94V-0/94HB
- ◆ COLOR: GRAY
- ◆ UNIT: mm

用途: 锁于功率晶体与散热片之间, 导热、绝缘性特佳。

TO3-1 结构图

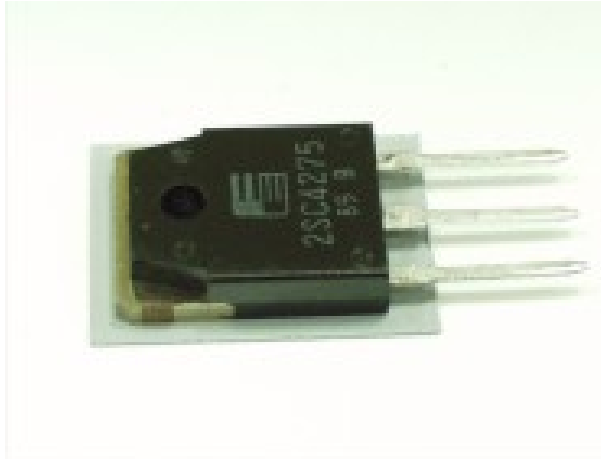


**PART NO**

TO3-1

**PACKAGE**

1000



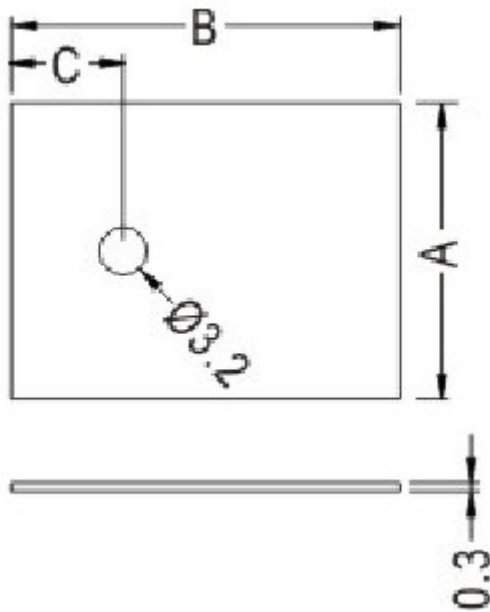
## 硅胶片

PART NO: TO3-2

- ◆ MATERIAL: SILICON (UL)
- ◆ FLAME CLASS: 94V-0/94HB
- ◆ COLOR: GRAY
- ◆ UINIT: mm

用途: 锁于功率晶体与散热片之间, 导热、绝缘性特佳。

TO3-2 结构图



PART NO	A	B	C	PACKAGE
TO3-2	19.0	25.0	7.2	1000



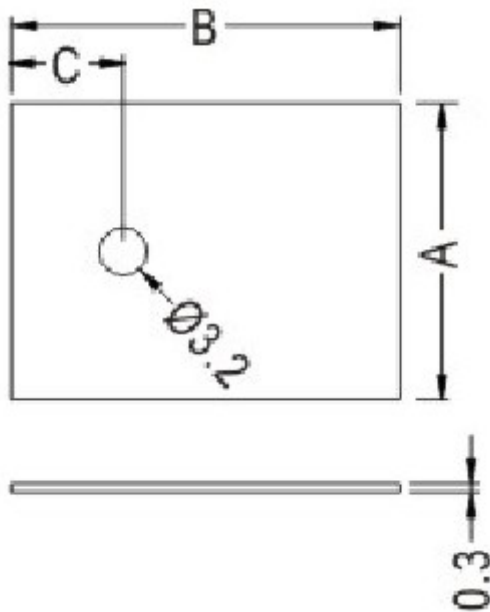
硅胶片

PART NO: TO3-3

- ◆ MATERIAL: SILICON (UL)
- ◆ FLAME CLASS: 94V-0/94HB
- ◆ COLOR: GRAY
- ◆ UNIT: mm

用途: 锁于功率晶体与散热片之间, 导热、绝缘性特佳。

TO3-3 结构图



PART NO	A	B	C	PACKAGE
TO3-3	13.2	19.0	5.0	1000