

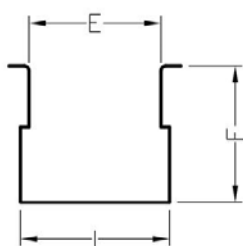
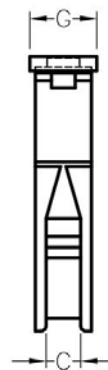
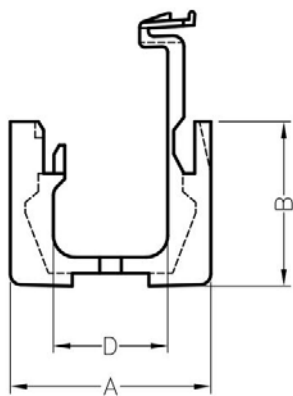
产品名称：方型护线环

规格型号：LSW-1

- ◆ MATERIAL: NYLON 66(UL)
- ◆ FLAME CLASS: 94V-2, 94V-0
- ◆ COLOR: BLACK, NATURAL
- ◆ UNIT: mm

用途：用于机壳的电线出线口，保护电线不受机壳刮伤，装配容易。

LSW-1 结构图



MOUNTING HOLE
THICKNESS: T

PART NO	A	B	C	D	E	F	G	I	T	PACKAGE
LSW-1	18.6	15.3	3.2	10.6	14.0	14.5	6.2	15.8	0.8~3.0	1000

(规格 / 尺寸) 代码说明：

T : 装配板厚

南京诺金电气有限公司

Nanjing Nowking Electric Co., Ltd



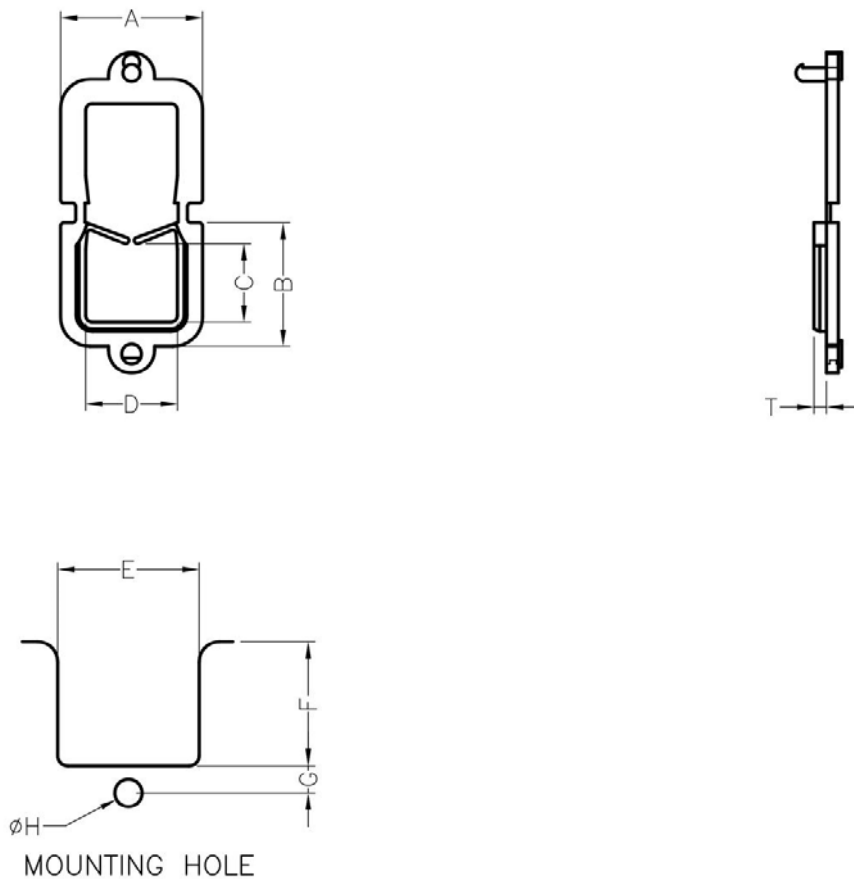
产品名称：方型护线环

规格型号：LSW-2

- ◆ MATERIAL: NYLON 66(UL)
- ◆ FLAME CLASS: 94V-2, 94V-0
- ◆ COLOR: BLACK, NATURAL
- ◆ UNIT: mm

用途：用于铁板间电线出入刮伤之保护，不易脱落，使用方便，不占空间之优点。

LSW-2 结构图



PART NO	A	B	C	D	E	F	G	H	T	PACKAGE
LSW-2	18.4	14.5	8.9	11.0	14.0	12.3	2.7	2.7	0.8~2.0	500

(规格 / 尺寸) 代码说明：

T : 装配板厚

南京诺金电气有限公司

Nanjing Nowking Electric Co., Ltd



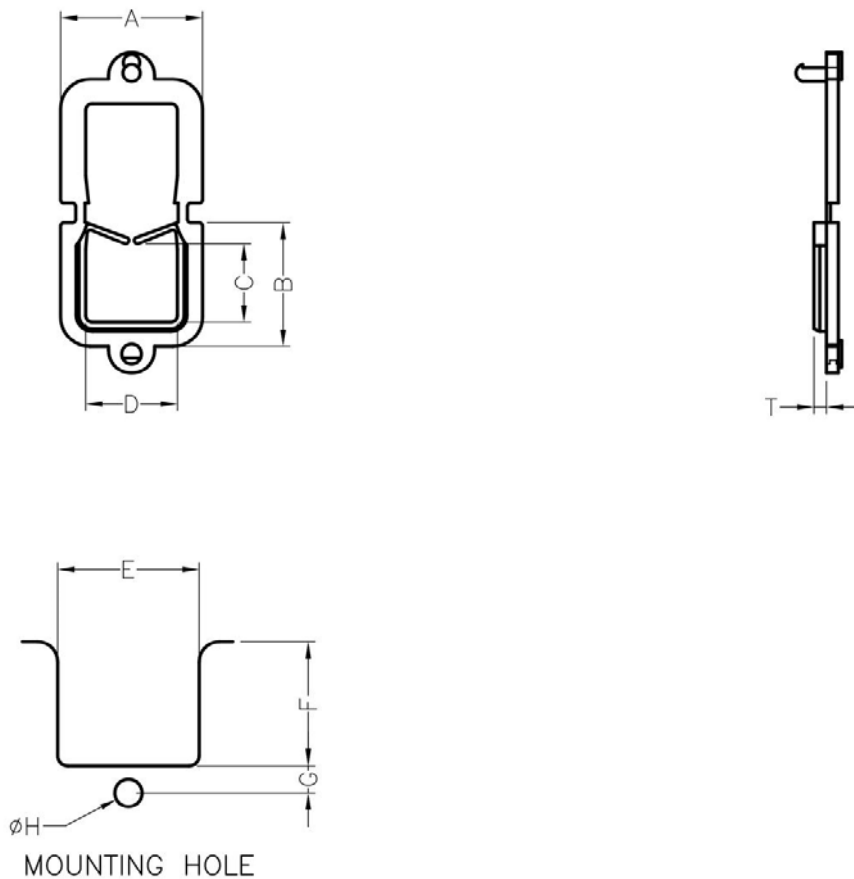
产品名称：方型护线环

规格型号：LSW-3

- ◆ MATERIAL: NYLON 66(UL)
- ◆ FLAME CLASS: 94V-2, 94V-0
- ◆ COLOR: BLACK, NATURAL
- ◆ UNIT: mm

用途：用于铁板间电线出入刮伤之保护，不易脱落，使用方便，不占空间之优点。

LSW-3 结构图



PART NO	A	B	C	D	E	F	G	H	T	PACKAGE
LSW-3	21.5	18.8	11.9	13.9	17.2	18.5	3.5	3.0	0.8~2.0	500

(规格 / 尺寸) 代码说明：

T：装配板厚

南京诺金电气有限公司

Nanjing Nowking Electric Co., Ltd



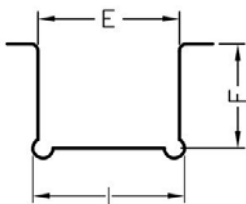
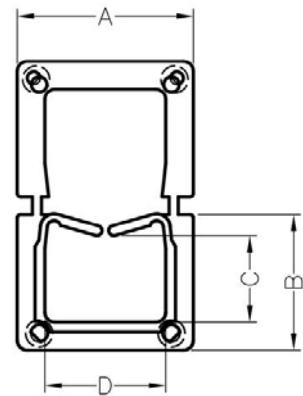
产品名称：方型护线环

规格型号：LSW-4

- ◆ MATERIAL: NYLON 66(UL)
- ◆ FLAME CLASS: 94V-2, 94V-0
- ◆ COLOR: BLACK, NATURAL
- ◆ UNIT: mm

用途：用于铁板间电线出入刮伤之保护，不易脱落，使用方便，不占空间之优点。

LSW-4 结构图



MOUNTING HOLE
THICKNESS: T

PART NO	A	B	C	D	E	F	I	-	T	PACKAGE
LSW-4	26.0	20.2	12.9	17.9	21.0	15.5	22.5	-	0.8~2.0	500

(规格 / 尺寸) 代码说明：

T : 装配板厚



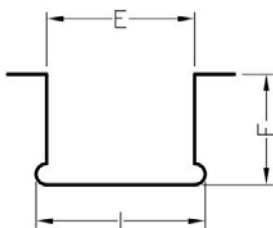
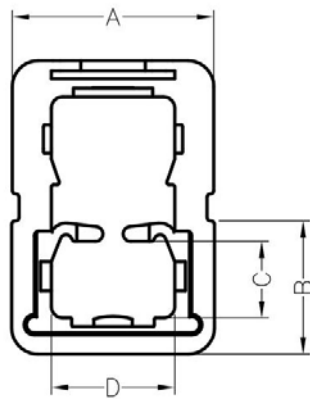
产品名称：方型护线环

规格型号：LSW-5

- ◆ MATERIAL: NYLON 66(UL)
- ◆ FLAME CLASS: 94V-2, 94V-0
- ◆ COLOR: BLACK, NATURAL
- ◆ UNIT: mm

用途：用于铁板间电线出入刮伤之保护，不易脱落，使用方便，不占空间之优点。

LSW-5 结构图



MOUNTING HOLE
THICKNESS: T

PART NO	A	B	C	D	E	F	I	T	PACKAGE
LSW-5	22.0	14.2	9.0	14.0	17.0	13.5	19.0	0.8~2.0	500

(规格 / 尺寸) 代码说明：

T：装配板厚



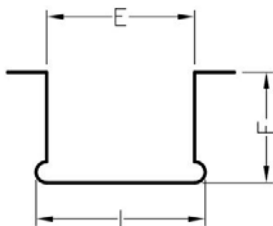
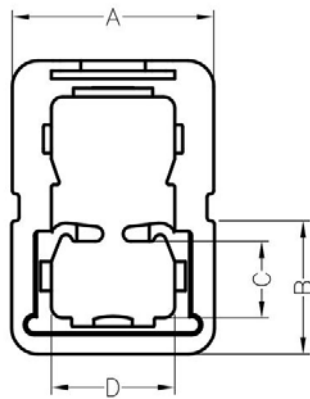
产品名称：方型护线环

规格型号：LSW-6

- ◆ MATERIAL: NYLON 66(UL)
- ◆ FLAME CLASS: 94V-2, 94V-0
- ◆ COLOR: BLACK, NATURAL
- ◆ UNIT: mm

用途：用于铁板间电线出入刮伤之保护，不易脱落，使用方便，不占空间之优点。

LSW-6 结构图



MOUNTING HOLE
THICKNESS: T

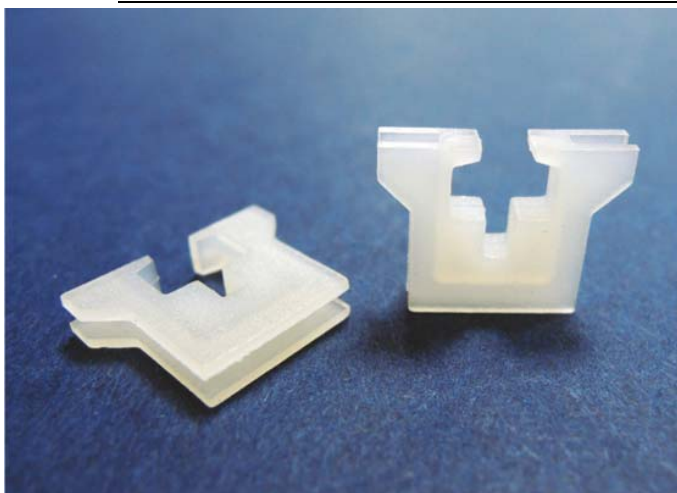
PART NO	A	B	C	D	E	F	I	T	PACKAGE
LSW-6	17.9	11.8	6.8	10.9	14.0	10.5	16.0	0.8~2.0	100

(规格 / 尺寸) 代码说明：

T：装配板厚

南京诺金电气有限公司

Nanjing Nowking Electric Co., Ltd



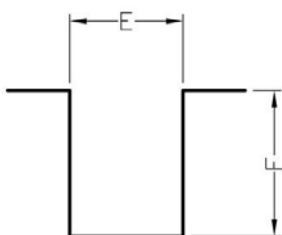
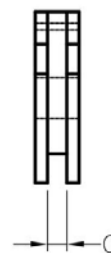
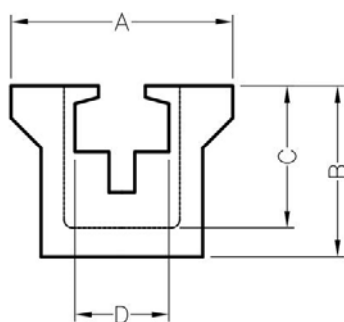
产品名称：方型护线环

规格型号：LSW-7

- ◆ MATERIAL: NYLON 66(UL)
- ◆ FLAME CLASS: 94V-2, 94V-0
- ◆ COLOR: BLACK, NATURAL
- ◆ UNIT: mm

用途：用于机壳的电线出线口, 保护电线不受机壳刮伤, 装配容易。

LSW-7 结构图



MOUNTING HOLE
CHASSIS THICKNESS : T

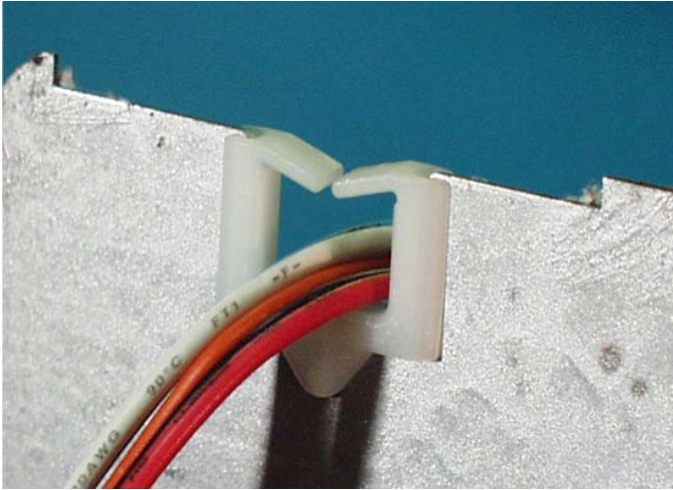
PART NO	A	B	C	D	E	F	G	T	PACKAGE
LSW-7	13.5	10.6	8.8	5.7	7.0	9.0	1.2	1.0	1000

(规格 / 尺寸) 代码说明：

T : 装配板厚

南京诺金电气有限公司

Nanjing Nowking Electric Co., Ltd



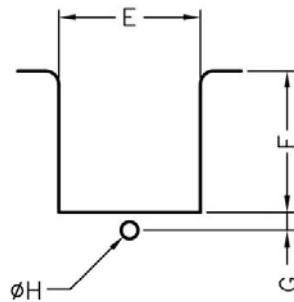
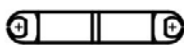
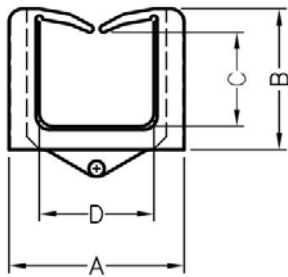
产品名称：方型护线环

规格型号：LSW-8

- ◆ MATERIAL: NYLON 66(UL)
- ◆ FLAME CLASS: 94V-2, 94V-0
- ◆ COLOR: BLACK, NATURAL
- ◆ UNIT: mm

用途：用于机壳的电线出线口, 保护电线不受机壳刮伤, 装配容易。

LSW-8 结构图



MOUNTING HOLE
CHASSIS THICKNESS : T

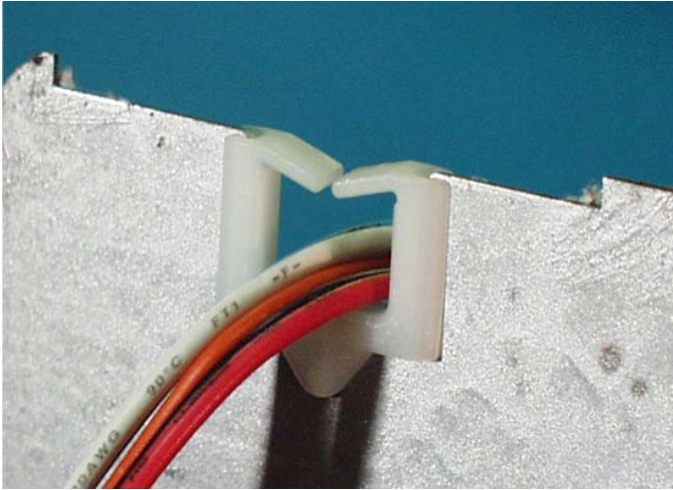
PART NO	A	B	C	D	E	F	G	H	T	PACKAGE
LSW-8	19.8	12.1	7.3	11.5	14.0	12.3	2.8	2.3	0.8~2.0	1000

(规格 / 尺寸) 代码说明 :

T : 装配板厚

南京诺金电气有限公司

Nanjing Nowking Electric Co., Ltd



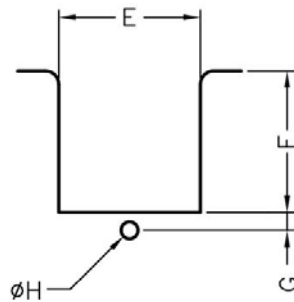
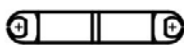
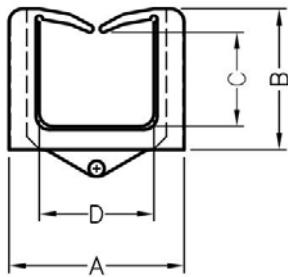
产品名称：方型护线环

规格型号：LSW-9

- ◆ MATERIAL: NYLON 66(UL)
- ◆ FLAME CLASS: 94V-2, 94V-0
- ◆ COLOR: BLACK, NATURAL
- ◆ UNIT: mm

用途：用于机壳的电线出线口, 保护电线不受机壳刮伤, 装配容易。

LSW-9 结构图



MOUNTING HOLE
CHASSIS THICKNESS : T

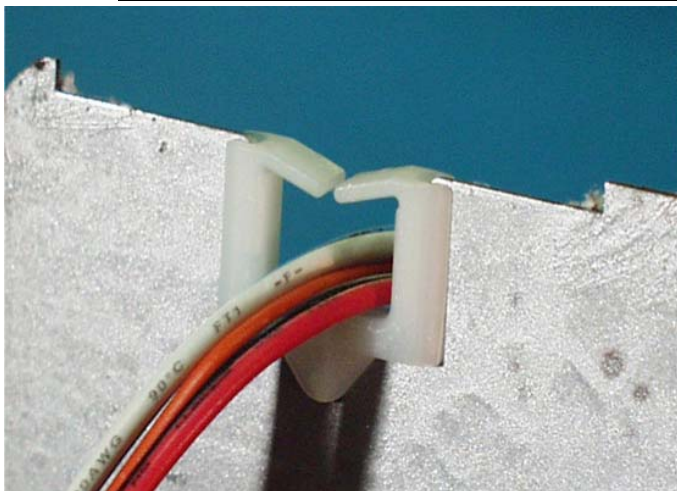
PART NO	A	B	C	D	E	F	G	H	T	PACKAGE
LSW-9	26.0	21.0	14.0	17.0	21.0	21.0	2.7	2.3	0.8~2.0	500

(规格 / 尺寸) 代码说明 :

T : 装配板厚

南京诺金电气有限公司

Nanjing Nowking Electric Co., Ltd



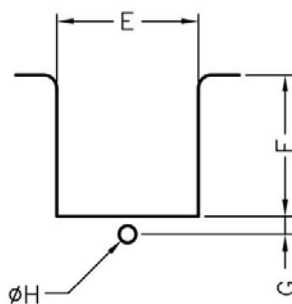
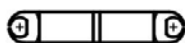
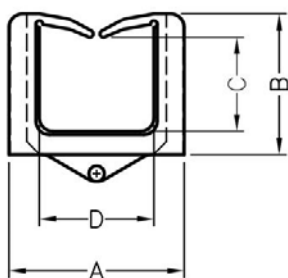
产品名称：方型护线环

规格型号：LSW-10

- ◆ MATERIAL: NYLON 66(UL)
- ◆ FLAME CLASS: 94V-2, 94V-0
- ◆ COLOR: BLACK, NATURAL
- ◆ UNIT: mm

用途：用于机壳的电线出线口, 保护电线不受机壳刮伤, 装配容易。

LSW-10 结构图



MOUNTING HOLE
CHASSIS THICKNESS : T

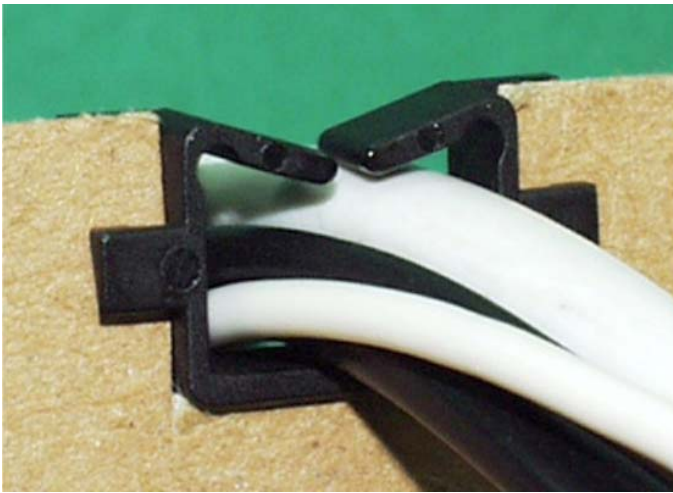
PART NO	A	B	C	D	E	F	G	H	T	PACKAGE
LSW-10	33.2	28.8	22.4	22.7	27.0	29.0	2.8	2.3	0.8~2.0	500

(规格 / 尺寸) 代码说明 :

T : 装配板厚

南京诺金电气有限公司

Nanjing Nowking Electric Co., Ltd



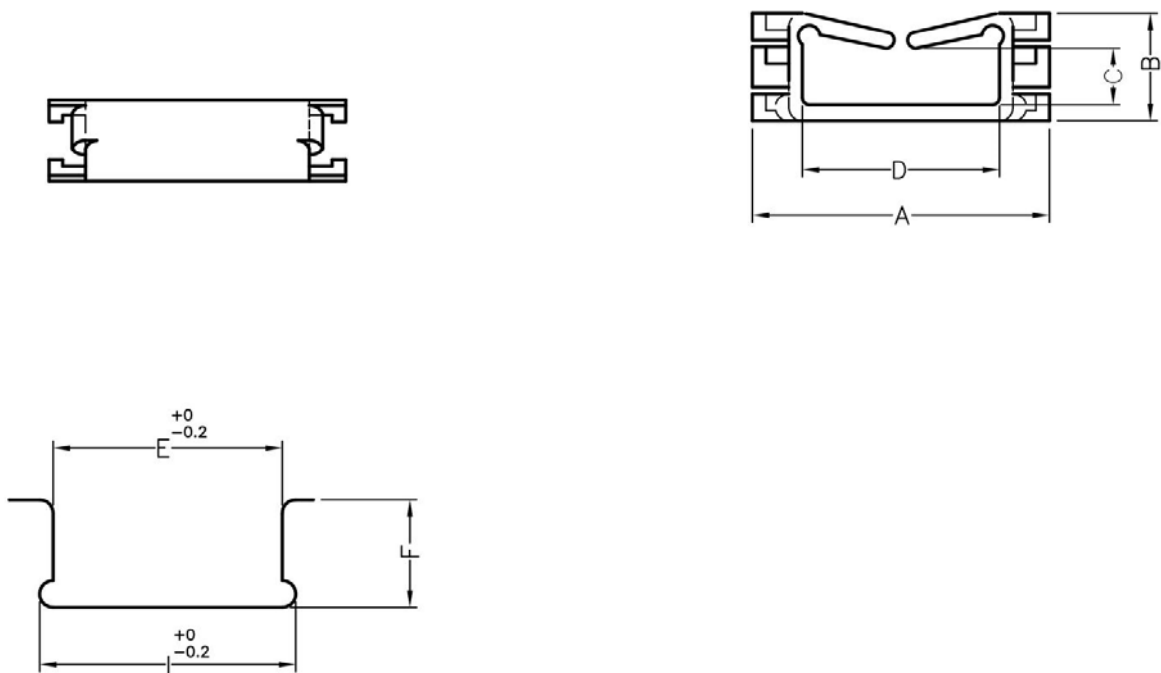
产品名称：方型护线环

规格型号：LSW-11

- ◆ MATERIAL: NYLON 66(UL)
- ◆ FLAME CLASS: 94V-2, 94V-0
- ◆ COLOR: BLACK, NATURAL
- ◆ UNIT: mm

用途：用于机壳的电线出线口, 保护电线不受机壳刮伤, 装配容易。

LSW-11 结构图



MOUNTING HOLE
THICKNESS: T

PART NO	A	B	C	D	E	F	I	T	PACKAGE
LSW-11	20.0	10.0	6.2	11.6	14.0	10.0	16.0	0.8~2.0	500

(规格 / 尺寸) 代码说明：

T : 装配板厚

南京诺金电气有限公司

Nanjing Nowking Electric Co., Ltd



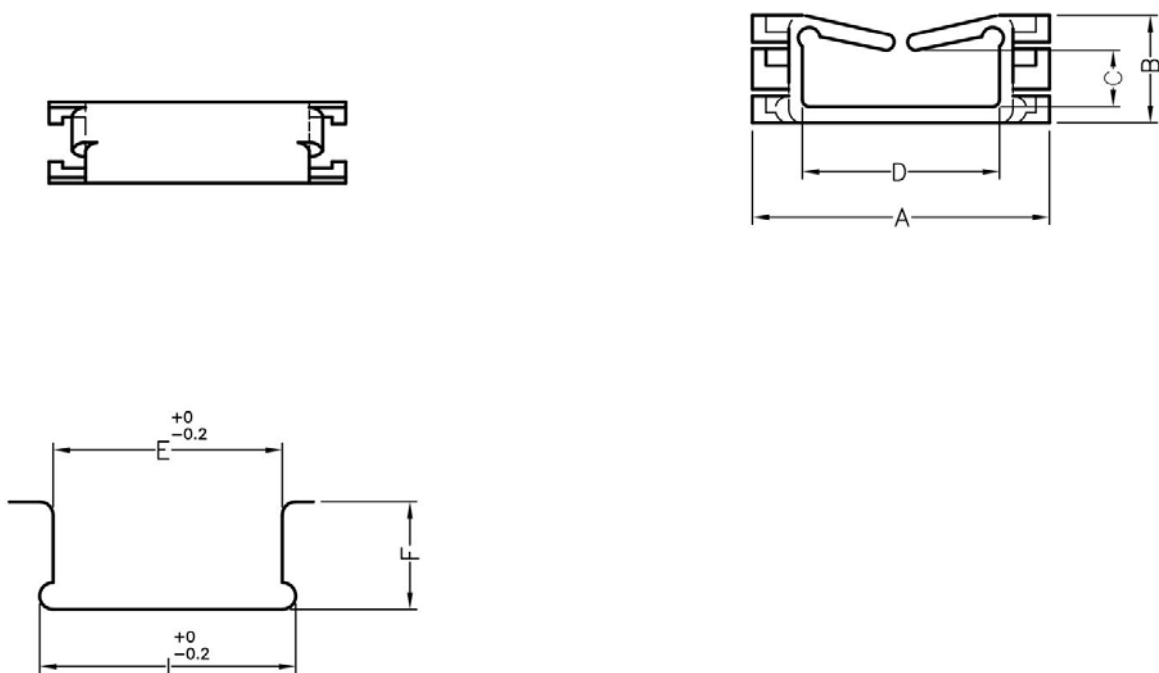
产品名称：方型护线环

规格型号：LSW-12

- ◆ MATERIAL: NYLON 66(UL)
- ◆ FLAME CLASS: 94V-2, 94V-0
- ◆ COLOR: BLACK, NATURAL
- ◆ UNIT: mm

用途：用于机壳的电线出线口, 保护电线不受机壳刮伤, 装配容易。

LSW-12 结构图



MOUNTING HOLE
THICKNESS: T

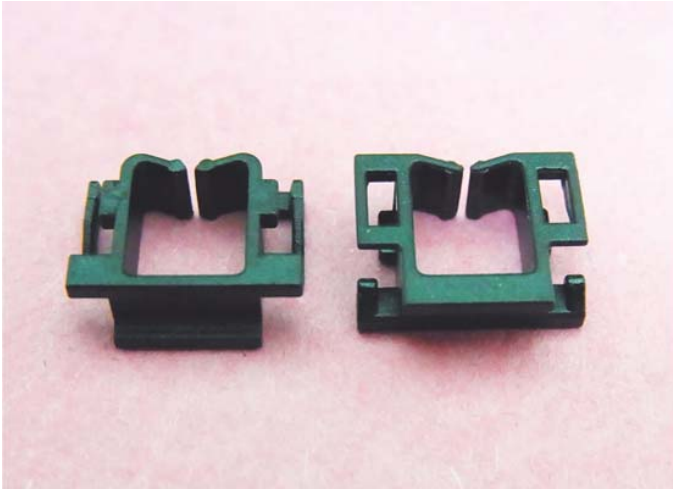
PART NO	A	B	C	D	E	F	I	T	PACKAGE
LSW-12	22.0	8.0	4.2	14.6	17.0	8.0	19.0	1.2~2.8	500

(规格 / 尺寸) 代码说明：

T : 装配板厚

南京诺金电气有限公司

Nanjing Nowking Electric Co., Ltd



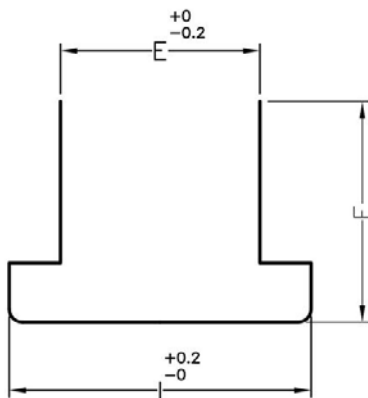
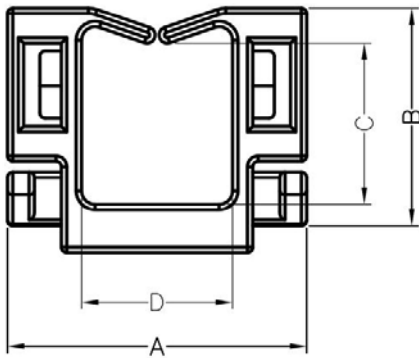
产品名称：方型护线环

规格型号：LSW-13

- ◆ MATERIAL: NYLON 66(UL)
- ◆ FLAME CLASS: 94V-2, 94V-0
- ◆ COLOR: BLACK, NATURAL
- ◆ UNIT: mm

用途：用于机壳的电线出线口, 保护电线不受机壳刮伤, 装配容易。

LSW-13 结构图



MOUNTING HOLE

PART NO	A	B	C	D	E	F	I	PACKAGE
LSW-13	11.1	8.1	6.0	5.6	7.4	8.2	11.2	500



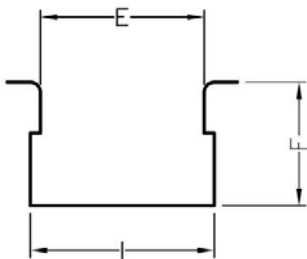
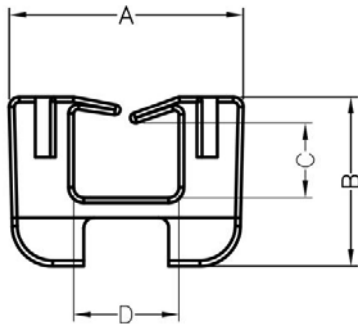
产品名称：方型护线环

规格型号：LSW-14

- ◆ MATERIAL: NYLON 66(UL)
- ◆ FLAME CLASS: 94V-2, 94V-0
- ◆ COLOR: BLACK, NATURAL
- ◆ UNIT: mm

用途：用于机壳的电线出线口, 保护电线不受机壳刮伤, 装配容易。

LSW-14 结构图



MOUNTING HOLE
THICKNESS: T

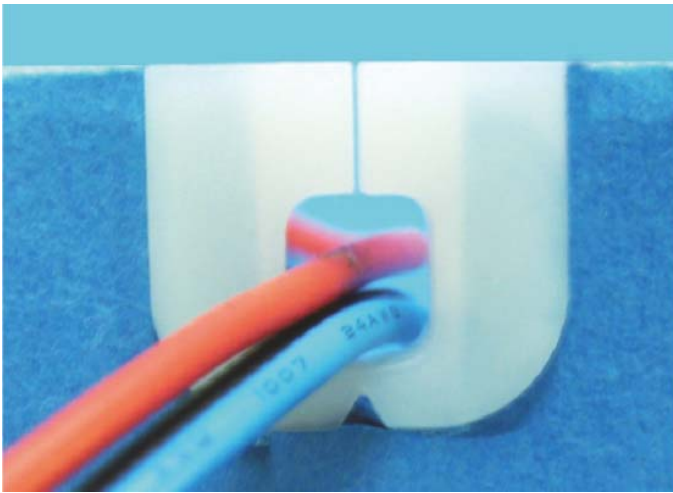
PART NO	A	B	C	D	E	F	I	T	PACKAGE
LSW-14	11.6	8.4	3.7	5.2	8.1	3.6	9.1	0.8~1.8	500

(规格 / 尺寸) 代码说明：

T : 装配板厚

南京诺金电气有限公司

Nanjing Nowking Electric Co., Ltd



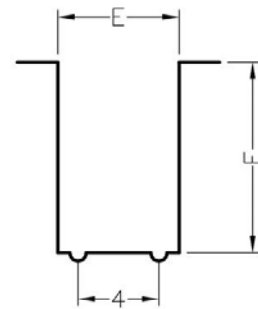
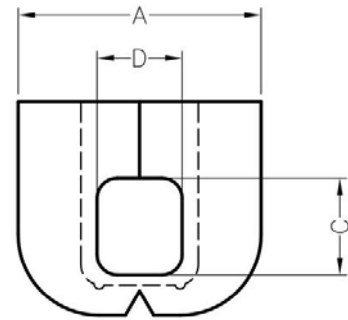
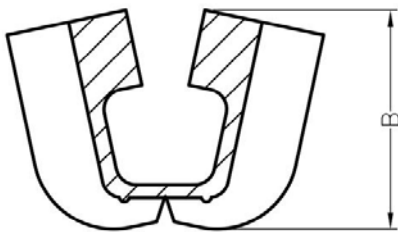
产品名称: 方型护线环

规格型号: LSW-15

- ◆ MATERIAL: NYLON 66(UL)
- ◆ FLAME CLASS: 94V-2, 94V-0
- ◆ COLOR: BLACK, NATURAL
- ◆ UNIT: mm

用途: 用于机壳的电线出线口, 保护电线不受机壳刮伤, 装配容易。

LSW-15 结构图



MOUNTING HOLE
CHASSIS THICKNESS : T

PART NO	A	B	C	D	E	F	G	T	PACKAGE
LSW-15	12.0	10.9	4.8	4.2	6.0	9.5	1.2	0.8~1.0	1000

(规格 / 尺寸) 代码说明:

T : 装配板厚

南京诺金电气有限公司

Nanjing Nowking Electric Co., Ltd



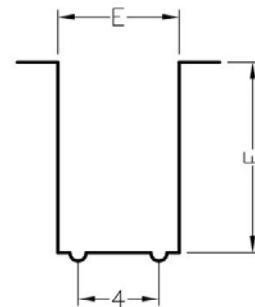
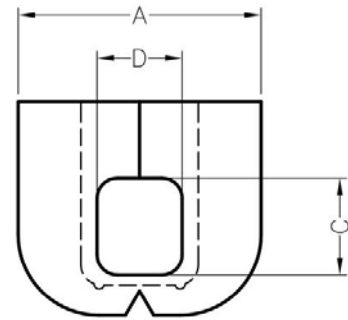
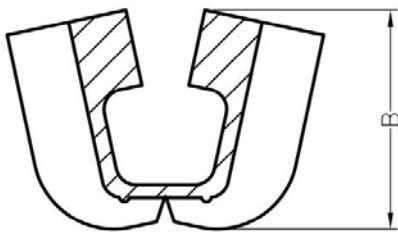
产品名称：方型护线环

规格型号：LSW-16

- ◆ MATERIAL: NYLON 66(UL)
- ◆ FLAME CLASS: 94V-2, 94V-0
- ◆ COLOR: BLACK, NATURAL
- ◆ UNIT: mm

用途：用于机壳的电线出线口, 保护电线不受机壳刮伤, 装配容易。

LSW-16 结构图



MOUNTING HOLE
CHASSIS THICKNESS :T

PART NO	A	B	C	D	E	F	G	T	PACKAGE
LSW-16	12.0	10.9	4.5	2.3	6.0	9.5	1.1	0.8~1.0	1000

(规格 / 尺寸) 代码说明 :

T : 装配板厚

南京诺金电气有限公司

Nanjing Nowking Electric Co., Ltd



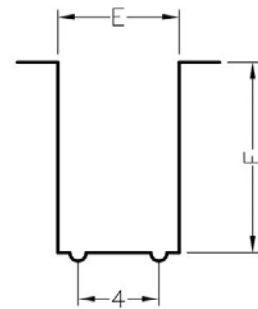
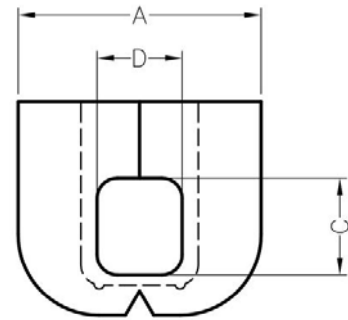
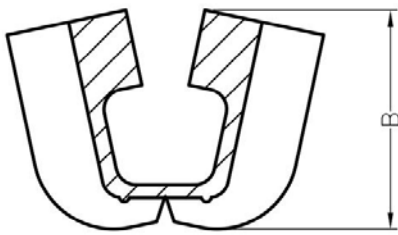
产品名称：方型护线环

规格型号：LSW-17

- ◆ MATERIAL: NYLON 66(UL)
- ◆ FLAME CLASS: 94V-2, 94V-0
- ◆ COLOR: BLACK, NATURAL
- ◆ UNIT: mm

用途：用于机壳的电线出线口, 保护电线不受机壳刮伤, 装配容易。

LSW-17 结构图



MOUNTING HOLE
CHASSIS THICKNESS : T

PART NO	A	B	C	D	E	F	G	T	PACKAGE
LSW-17	12.0	10.8	4.6	4.6	6.0	9.5	1.1	0.8~1.0	1000

(规格 / 尺寸) 代码说明 :

T : 装配板厚

南京诺金电气有限公司

Nanjing Nowking Electric Co., Ltd



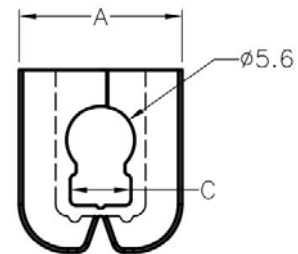
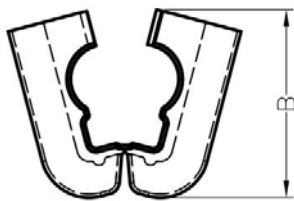
产品名称：方型护线环

规格型号：LSW-18

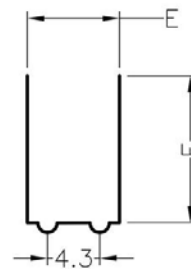
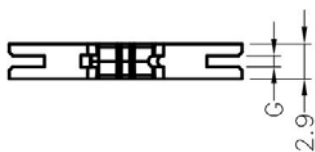
- ◆ MATERIAL: NYLON 66(UL)
- ◆ FLAME CLASS: 94V-2, 94V-0
- ◆ COLOR: BLACK, NATURAL
- ◆ UNIT: mm

用途：用于机壳的电线出线口, 保护电线不受机壳刮伤, 装配容易。

LSW-18 结构图



CLOSE



MOUNTING HOLE
CHASSIS THICKNESS : T

PART NO	A	B	C	D	E	F	G	T	PACKAGE
LSW-18	13.4	15.5	5.0	7.6	12.2	0.9	0.8	1000	13.4

(规格 / 尺寸) 代码说明 :

T : 装配板厚

南京诺金电气有限公司

Nanjing Nowking Electric Co., Ltd



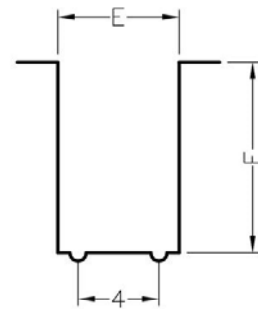
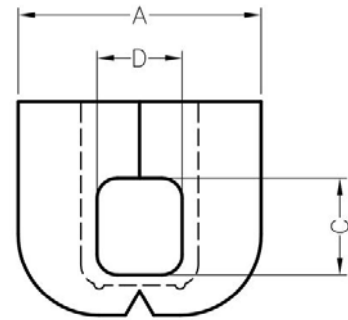
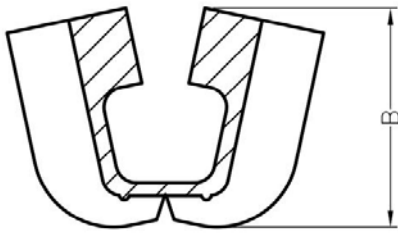
产品名称: 方型护线环

规格型号: LSW-19

- ◆ MATERIAL: NYLON 66(UL)
- ◆ FLAME CLASS: 94V-2, 94V-0
- ◆ COLOR: BLACK, NATURAL
- ◆ UNIT: mm

用途: 用于机壳的电线出线口, 保护电线不受机壳刮伤, 装配容易。

LSW-19 结构图



MOUNTING HOLE
CHASSIS THICKNESS :T

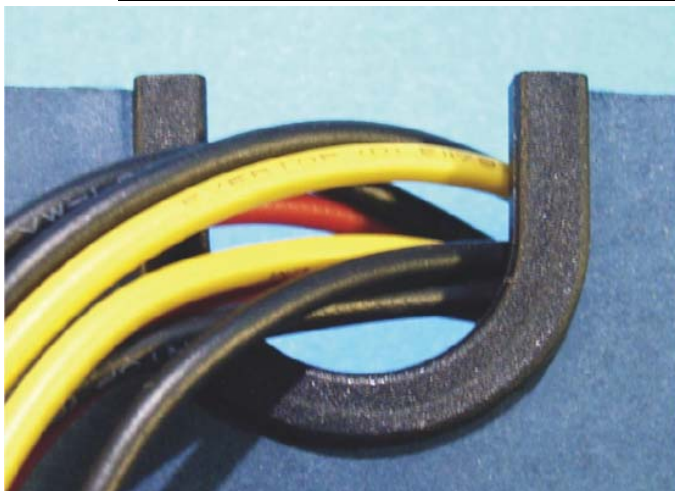
PART NO	A	B	C	D	E	F	G	T	PACKAGE
LSW-19	12.0	11.1	6.8	2.3	6.0	9.5	1.2	0.8~1.0	1000

(规格 / 尺寸) 代码说明:

T : 装配板厚

南京诺金电气有限公司

Nanjing Nowking Electric Co., Ltd



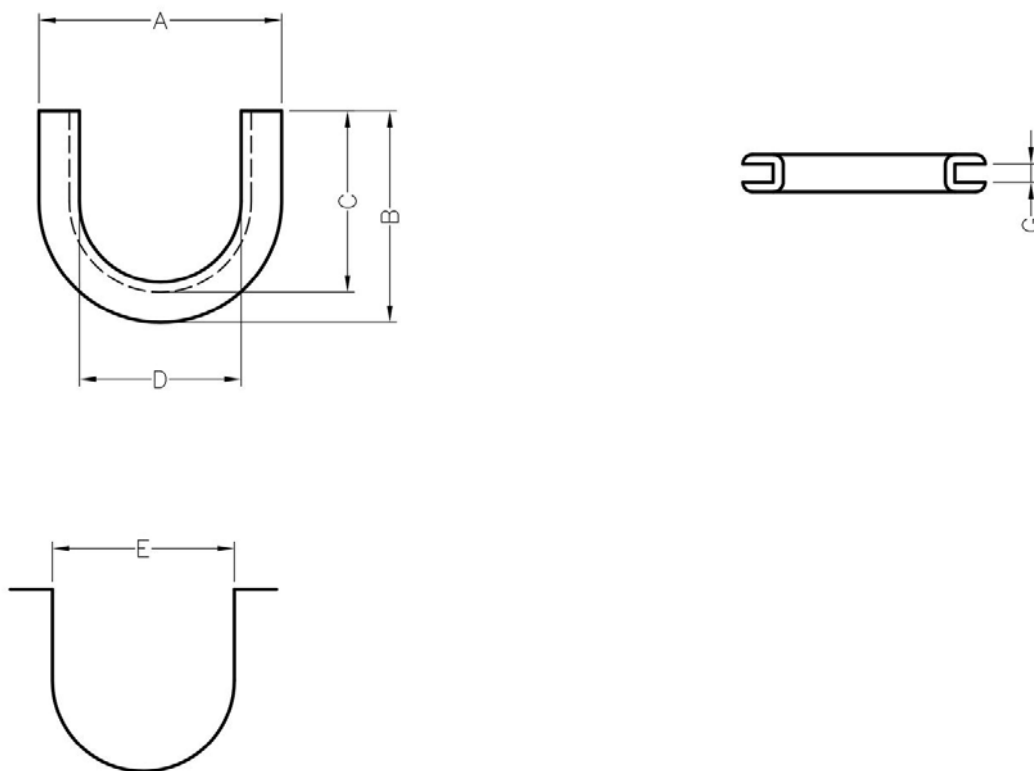
产品名称：方型护线环

规格型号：LSW-20

- ◆ MATERIAL: NYLON 66(UL)
- ◆ FLAME CLASS: 94V-2, 94V-0
- ◆ COLOR: BLACK, NATURAL
- ◆ UNIT: mm

用途：用于机壳的电线出线口, 保护电线不受机壳刮伤, 装配容易。

LSW-20 结构图



MOUNTING HOLE
CHASSIS THICKNESS : T

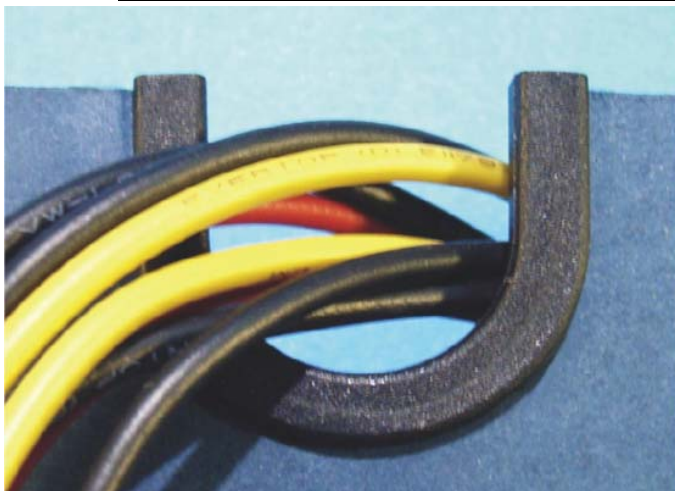
PART NO	A	B	C	D	E	G	T	PACKAGE
LSW-20	24.0	21.0	18.0	16.0	18.0	1.8	1.7~1.8	1000

(规格 / 尺寸) 代码说明 :

T : 装配板厚

南京诺金电气有限公司

Nanjing Nowking Electric Co., Ltd



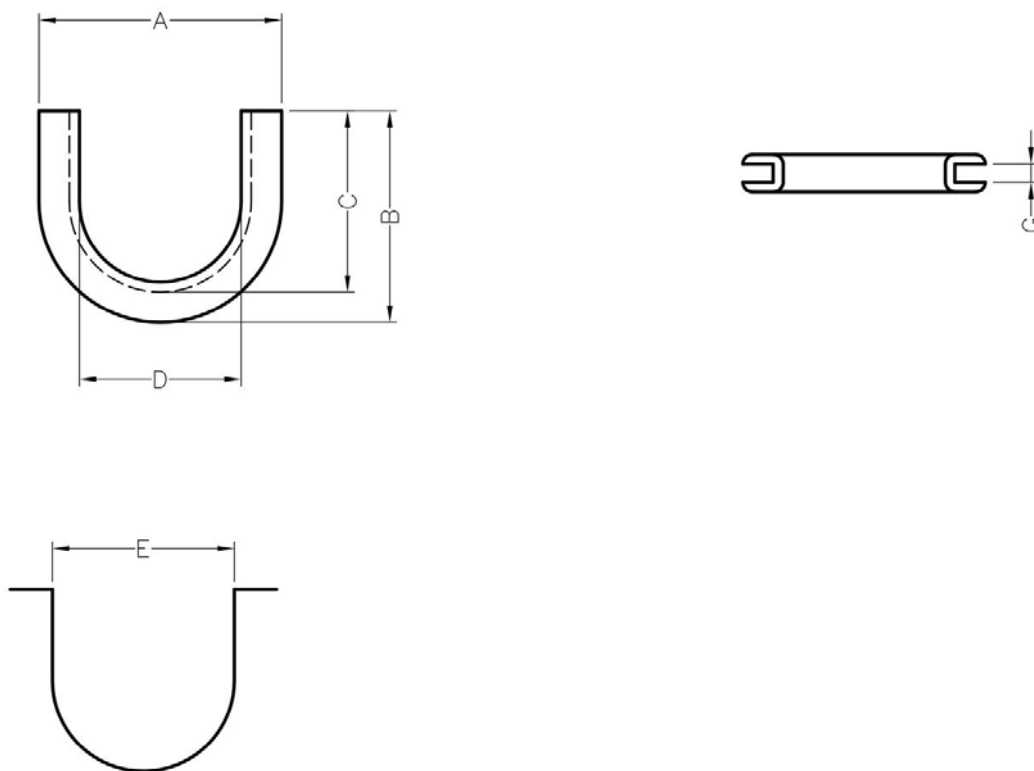
产品名称：方型护线环

规格型号：LSW-21

- ◆ MATERIAL: NYLON 66(UL)
- ◆ FLAME CLASS: 94V-2, 94V-0
- ◆ COLOR: BLACK, NATURAL
- ◆ UNIT: mm

用途：用于机壳的电线出线口, 保护电线不受机壳刮伤, 装配容易。

LSW-21 结构图



MOUNTING HOLE
CHASSIS THICKNESS :T

PART NO	A	B	C	D	E	G	T	PACKAGE
LSW-21	24.3	27.0	24.5	17.5	19.3	1.9	1.7~1.8	1000

(规格 / 尺寸) 代码说明 :

T : 装配板厚

南京诺金电气有限公司

Nanjing Nowking Electric Co., Ltd



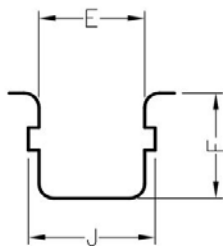
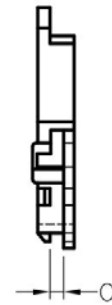
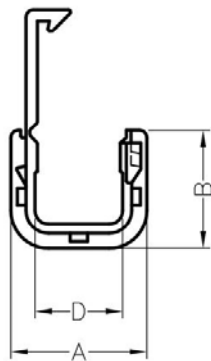
产品名称：方型护线环

规格型号：LSW-22

- ◆ MATERIAL: NYLON 66(UL)
- ◆ FLAME CLASS: 94V-2, 94V-0
- ◆ COLOR: BLACK, NATURAL
- ◆ UNIT: mm

用途：用于铁板间电线出入刮伤之保护，不易脱落，使用方便，不占空间之优点。

LSW-22 结构图



MOUNTING HOLE
THICKNESS: T

PART NO	A	B	C	D	E	F	J	T	PACKAGE
LSW-22	18.0	15.7	1.8	11.6	14.0	14.0	16.8	0.8~2.0	1000

(规格 / 尺寸) 代码说明：

T : 装配板厚

产品名称：方型护线环

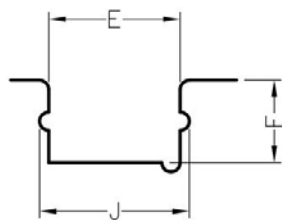
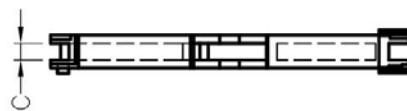
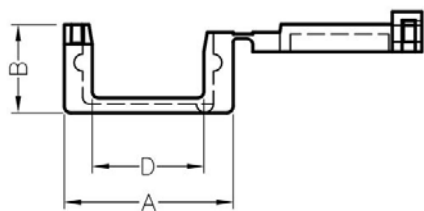
规格型号：LSW-23

- ◆ MATERIAL: NYLON 66(UL)
- ◆ FLAME CLASS: 94V-2, 94V-0
- ◆ COLOR: BLACK, NATURAL
- ◆ UNIT: mm

用途：用于铁板间电线出入刮伤之保护，不易脱落，使用方便，不占空间之优点。



LSW-23 结构图



MOUNTING HOLE
MAXIMUM THICKNESS: T

PART NO	A	B	C	D	E	F	J	T	PACKAGE
LSW-23	25.7	13.5	2.5	17.0	20.0	12.6	22.8	2.1	1000

(规格 / 尺寸) 代码说明：

T : 装配板厚

南京诺金电气有限公司

Nanjing Nowking Electric Co., Ltd



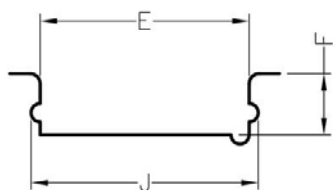
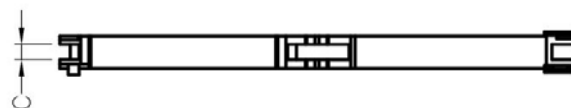
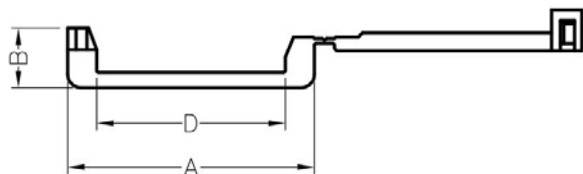
产品名称：方型护线环

规格型号：LSW-24

- ◆ MATERIAL: NYLON 66(UL)
- ◆ FLAME CLASS: 94V-2, 94V-0
- ◆ COLOR: BLACK, NATURAL
- ◆ UNIT: mm

用途：用于铁板间电线出入刮伤之保护，不易脱落，使用方便，不占空间之优点。

LSW-24 结构图



MOUNTING HOLE
MAXIMUM THICKNESS: T

PART NO	A	B	C	D	E	F	J	T	PACKAGE
LSW-24	36.6	8.9	2.3	28.0	31.0	9.1	33.7	2.0	1000

(规格 / 尺寸) 代码说明：

T : 装配板厚

南京诺金电气有限公司

Nanjing Nowking Electric Co., Ltd



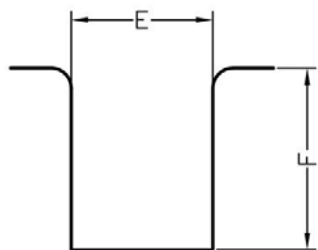
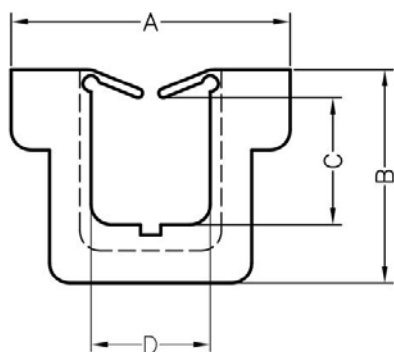
产品名称：方型护线环

规格型号：LSW-25

- ◆ MATERIAL: NYLON 66(UL)
- ◆ FLAME CLASS: 94V-2, 94V-0
- ◆ COLOR: BLACK, NATURAL
- ◆ UNIT: mm

用途：用于机壳的电线出线口，保护电线不受机壳刮伤，装配容易。

LSW-25 结构图



MOUNTING HOLE
CHASSIS THICKNESS :T

PART NO	A	B	C	D	E	F	T	PACKAGE
LSW-25	13.8	10.6	6.3	5.9	7.0	9.0	0.6~1.0	1000

(规格 / 尺寸) 代码说明：

T : 装配板厚

南京诺金电气有限公司

Nanjing Nowking Electric Co., Ltd



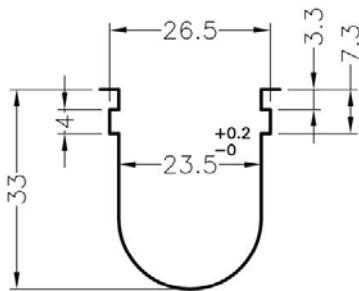
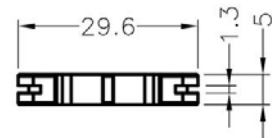
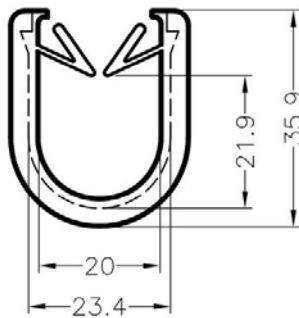
产品名称：方型护线环

规格型号：LSW-26

- ◆ MATERIAL: NYLON 66(UL)
- ◆ FLAME CLASS: 94V-2, 94V-0
- ◆ COLOR: BLACK, NATURAL
- ◆ UNIT: mm

用途：用于机壳的电线出线口，保护电线不受机壳刮伤，装配容易。

LSW-26 结构图



MOUNTING HOLE
CHASSIS THICKNESS : T

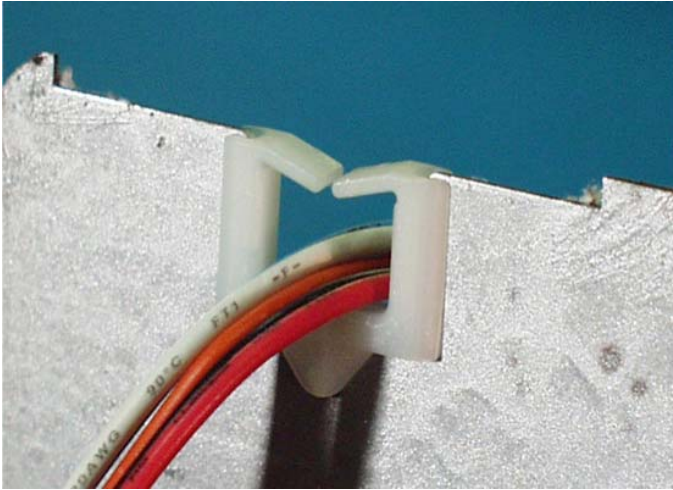
PART NO	T	PACKAGE
LSW-26	0.8~1.2	1000

(规格 / 尺寸) 代码说明：

T : 装配板厚

南京诺金电气有限公司

Nanjing Nowking Electric Co., Ltd



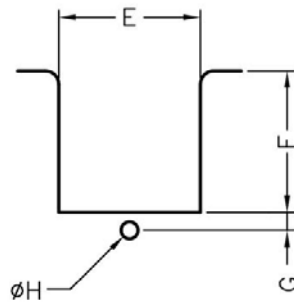
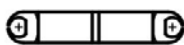
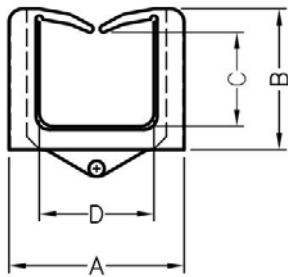
产品名称：方型护线环

规格型号：LSW-27

- ◆ MATERIAL: NYLON 66(UL)
- ◆ FLAME CLASS: 94V-2, 94V-0
- ◆ COLOR: BLACK, NATURAL
- ◆ UNIT: mm

用途：用于机壳的电线出线口, 保护电线不受机壳刮伤, 装配容易。

LSW-27 结构图



MOUNTING HOLE
CHASSIS THICKNESS : T

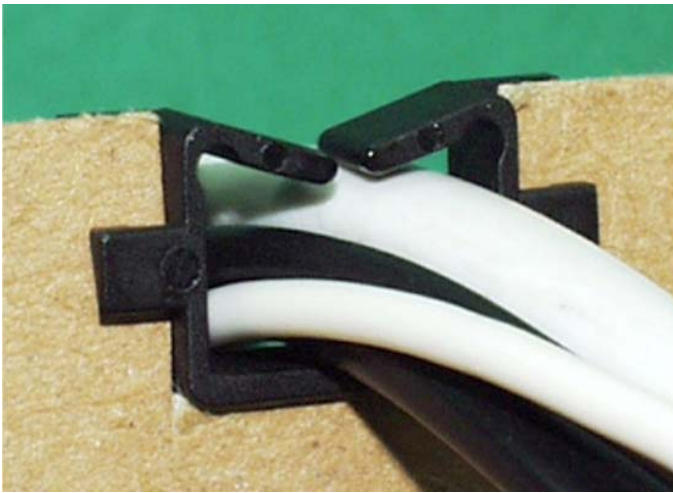
PART NO	A	B	C	D	E	F	G	H	T	PACKAGE
LSW-27	26.0	21.0	14.0	17.0	21.0	21.0	2.7	1.87	0.8~2.0	500

(规格 / 尺寸) 代码说明 :

T : 装配板厚

南京诺金电气有限公司

Nanjing Nowking Electric Co., Ltd



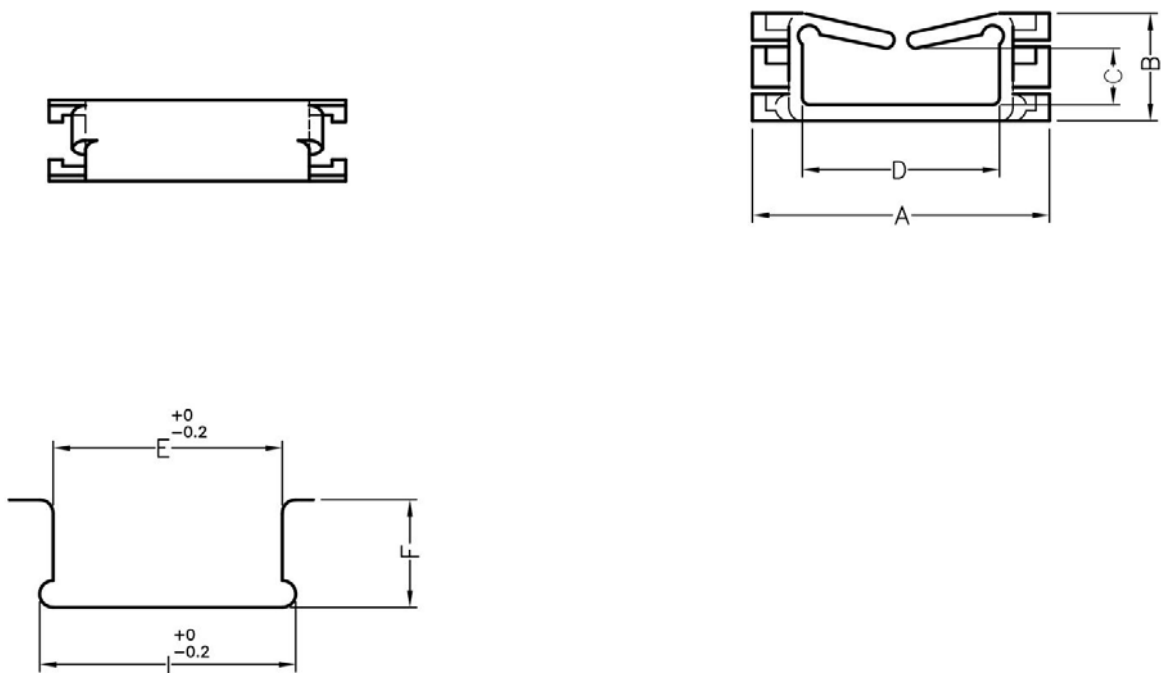
产品名称：方型护线环

规格型号：LSW-28

- ◆ MATERIAL: NYLON 66(UL)
- ◆ FLAME CLASS: 94V-2, 94V-0
- ◆ COLOR: BLACK, NATURAL
- ◆ UNIT: mm

用途：用于机壳的电线出线口, 保护电线不受机壳刮伤, 装配容易。

LSW-28 结构图



MOUNTING HOLE
THICKNESS: T

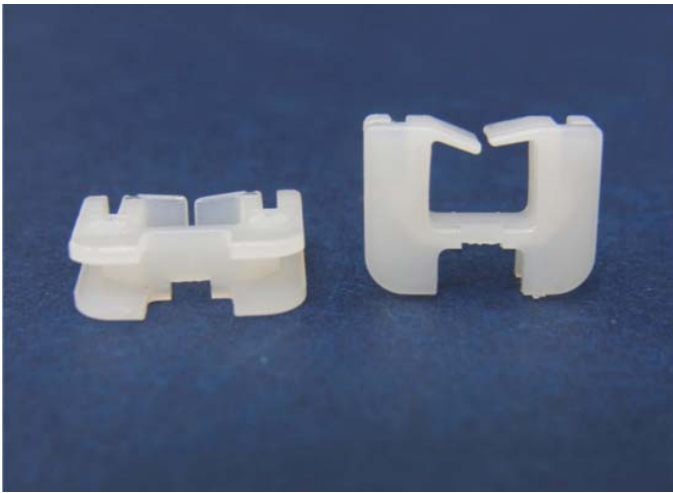
PART NO	A	B	C	D	E	F	I	T	PACKAGE
LSW-28	20.0	10.0	6.2	11.6	14.0	10.0	16.0	1.9~2.0	500

(规格 / 尺寸) 代码说明：

T : 装配板厚

南京诺金电气有限公司

Nanjing Nowking Electric Co., Ltd



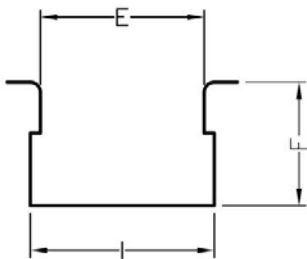
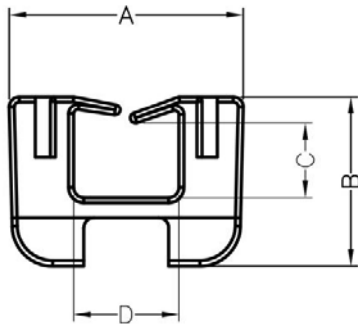
产品名称：方型护线环

规格型号：LSW-29

- ◆ MATERIAL: NYLON 66(UL)
- ◆ FLAME CLASS: 94V-2, 94V-0
- ◆ COLOR: BLACK, NATURAL
- ◆ UNIT: mm

用途：用于机壳的电线出线口, 保护电线不受机壳刮伤, 装配容易。

LSW-29 结构图



MOUNTING HOLE
THICKNESS: T

PART NO	A	B	C	D	E	F	I	T	PACKAGE
LSW-29	16.9	9.1	3.4	10.2	12.8	3.4	13.8	0.9~2.0	500

(规格 / 尺寸) 代码说明：

T : 装配板厚

南京诺金电气有限公司

Nanjing Nowking Electric Co., Ltd



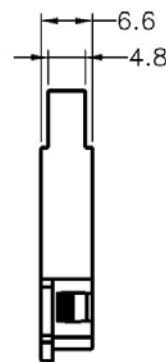
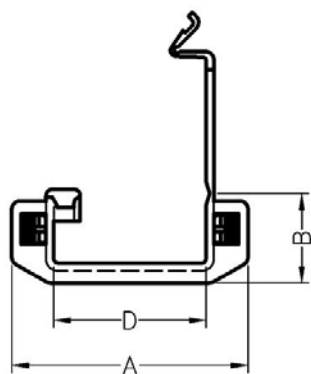
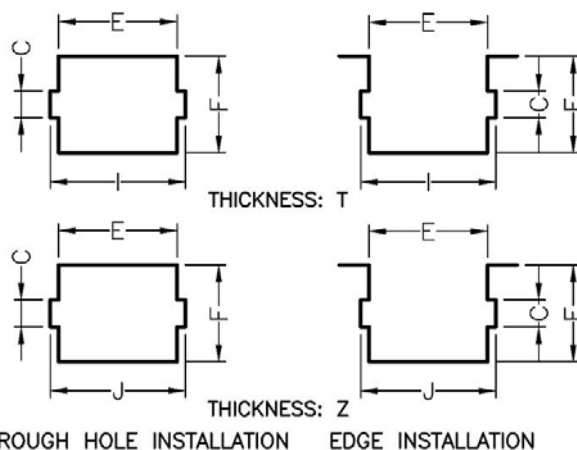
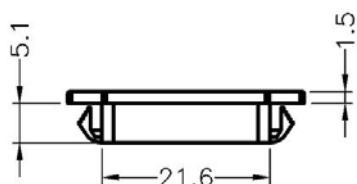
产品名称：方型护线环

规格型号：LSW-30

- ◆ MATERIAL: NYLON 66(UL)
- ◆ FLAME CLASS: 94V-2, 94V-0
- ◆ COLOR: BLACK, NATURAL
- ◆ UNIT: mm

用途：用于铁板间电线出入刮伤之保护，不易脱落，使用方便，不占空间之优点。

LSW-30 结构图



PART NO	A	B	C	D	E	F	I	J	T	Z	PACKAGE
LSW-30	30.4	11.6	4.1	19.6	21.8	10.7	25.0	26.0	0.8~1.6	2.0	500

(规格 / 尺寸) 代码说明：

T：装配板厚

Z：装配板厚

南京诺金电气有限公司

Nanjing Nowking Electric Co., Ltd



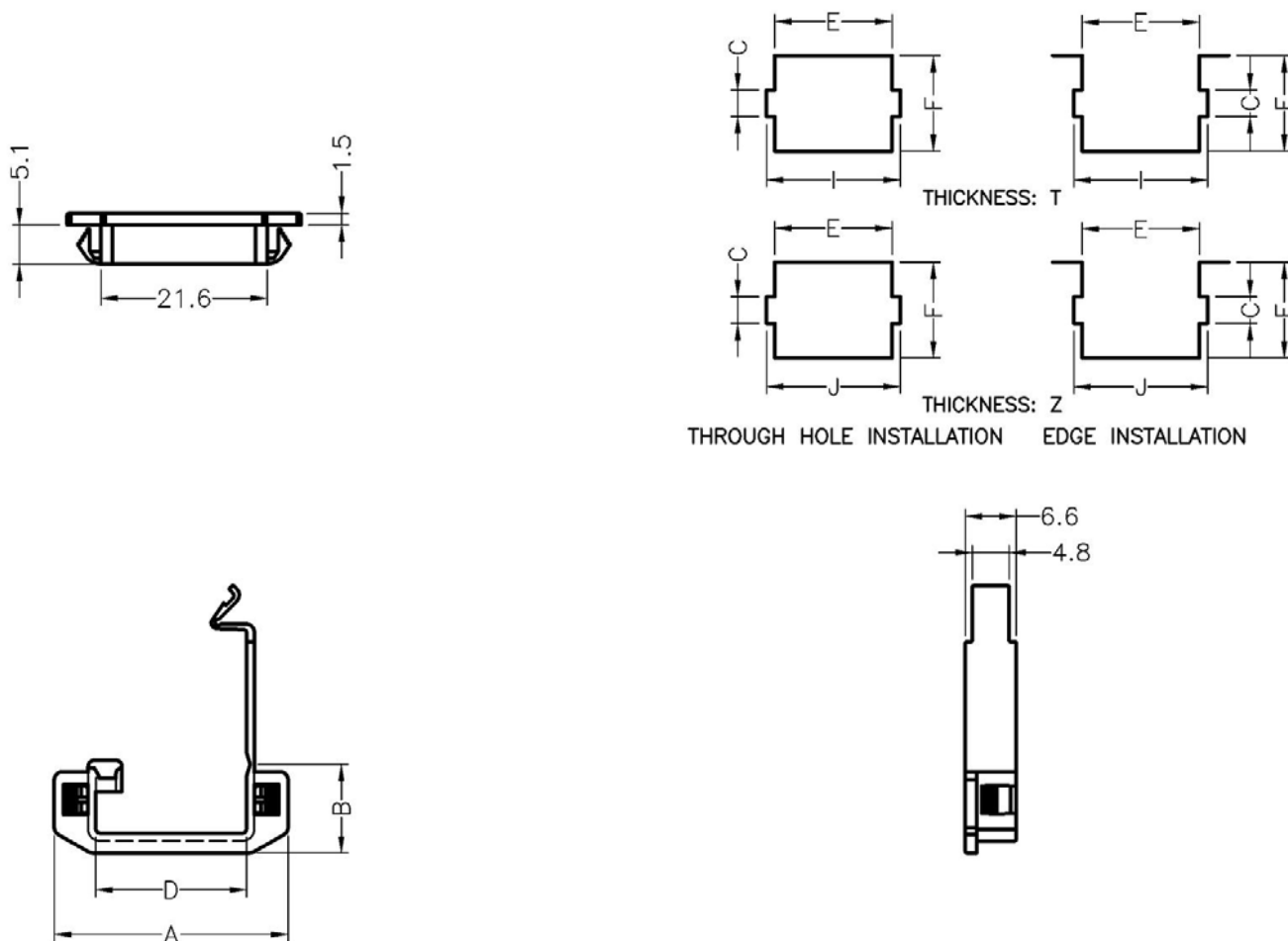
产品名称：方型护线环

规格型号：LSW-31

- ◆ MATERIAL: NYLON 66(UL)
- ◆ FLAME CLASS: 94V-2, 94V-0
- ◆ COLOR: BLACK, NATURAL
- ◆ UNIT: mm

用途：用于铁板间电线出入刮伤之保护，不易脱落，使用方便，不占空间之优点。

LSW-31 结构图



PART NO	A	B	C	D	E	F	I	J	T	Z	PACKAGE
LSW-31	31.0	18.6	5.0	19.6	22.0	18.0	25.0	26.0	0.8~1.6	2.0	500

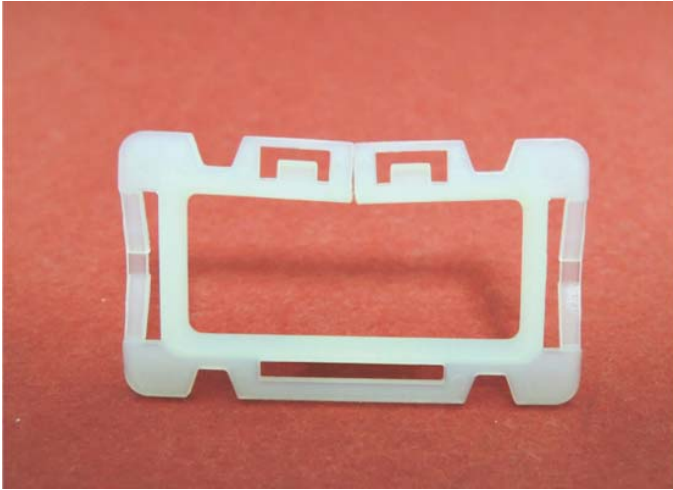
(规格 / 尺寸) 代码说明：

T：装配板厚

Z：装配板厚

南京诺金电气有限公司

Nanjing Nowking Electric Co., Ltd



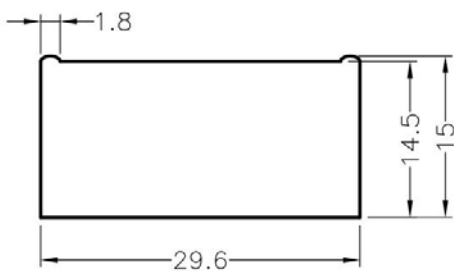
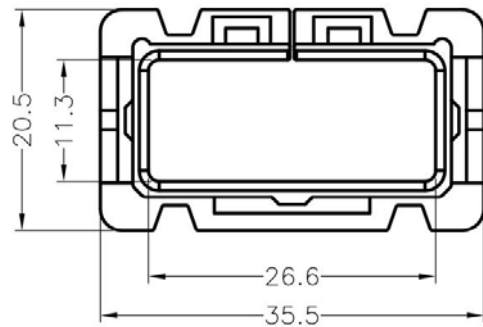
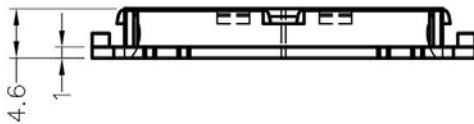
产品名称: 方型护线环

规格型号: LSW-32

- ◆ MATERIAL: NYLON 66(UL)
- ◆ FLAME CLASS: 94V-2, 94V-0
- ◆ COLOR: BLACK, NATURAL
- ◆ UNIT: mm

用途: 用于铁板间电线出入刮伤之保护, 不易脱落, 使用方便, 不占空间之优点。

LSW-32 结构图

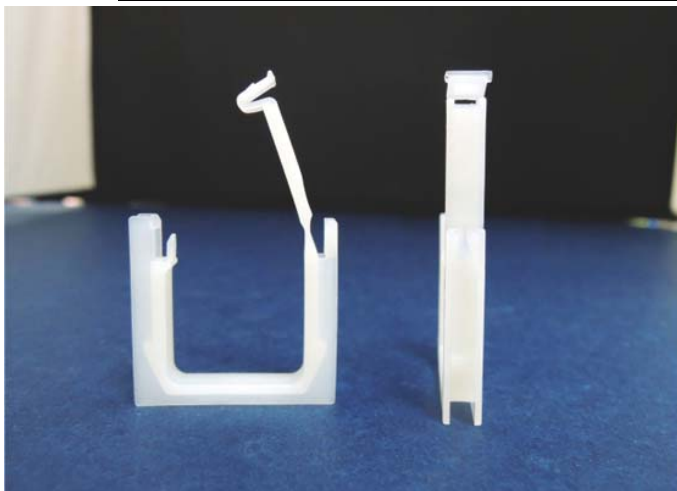


MOUNTING HOLE
THICKNESS: 0.8~2.0

PART NO	PACKAGE
LSW-32	500

南京诺金电气有限公司

Nanjing Nowking Electric Co., Ltd



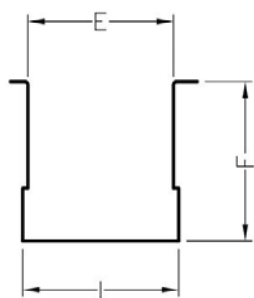
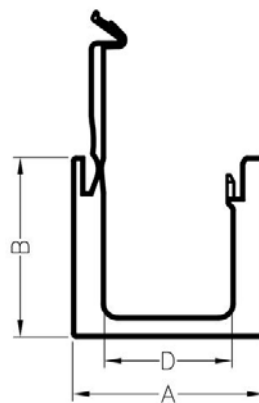
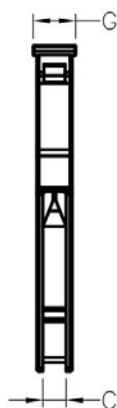
产品名称：方型护线环

规格型号：LSW-33

- ◆ MATERIAL: NYLON 66(UL)
- ◆ FLAME CLASS: 94V-2, 94V-0
- ◆ COLOR: BLACK, NATURAL
- ◆ UNIT: mm

用途：用于铁板间电线出入刮伤之保护，不易脱落，使用方便，不占空间之优点。

LSW-33 结构图



MOUNTING HOLE
THICKNESS: T

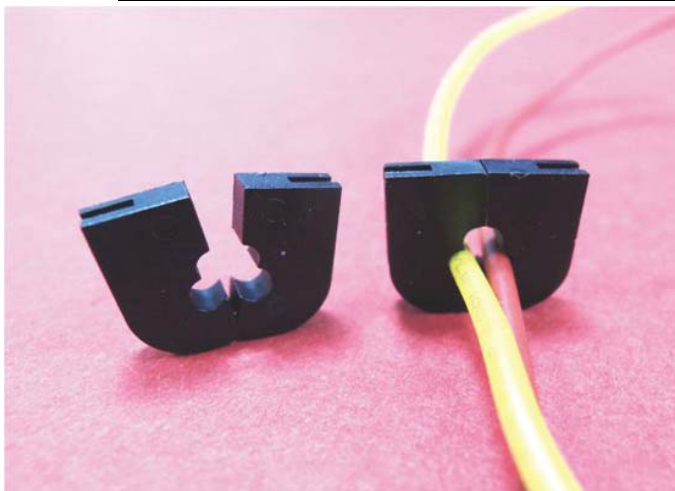
PART NO	A	B	C	D	E	F	G	I	T	PACKAGE
LSW-33	27.0	25.5	3.3	18.0	22.5	24.7	6.0	24.1	0.8~3.0	1000

(规格 / 尺寸) 代码说明：

T : 装配板厚

南京诺金电气有限公司

Nanjing Nowking Electric Co., Ltd



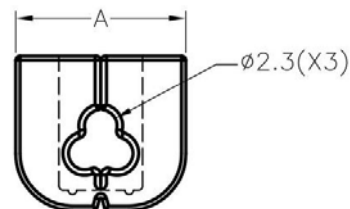
产品名称：方型护线环

规格型号：LSW-34

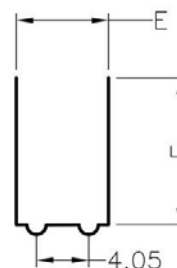
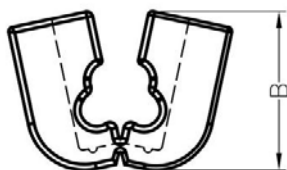
- ◆ MATERIAL: NYLON 66(UL)
- ◆ FLAME CLASS: 94V-2, 94V-0
- ◆ COLOR: BLACK, NATURAL
- ◆ UNIT: mm

用途：用于机壳的电线出线口, 保护电线不受机壳刮伤, 装配容易。

LSW-34 结构图



CLOSE



MOUNTING HOLE
CHASSIS THICKNESS : T

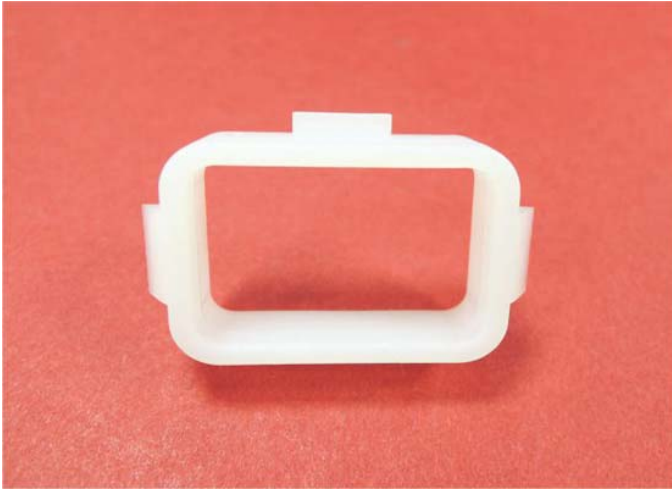
PART NO	A	B	E	F	G	T	PACKAGE
LSW-34	12.0	11.2	6.35	9.65	1.1	0.8~1.0	1000

(规格 / 尺寸) 代码说明 :

T : 装配板厚

南京诺金电气有限公司

Nanjing Nowking Electric Co., Ltd



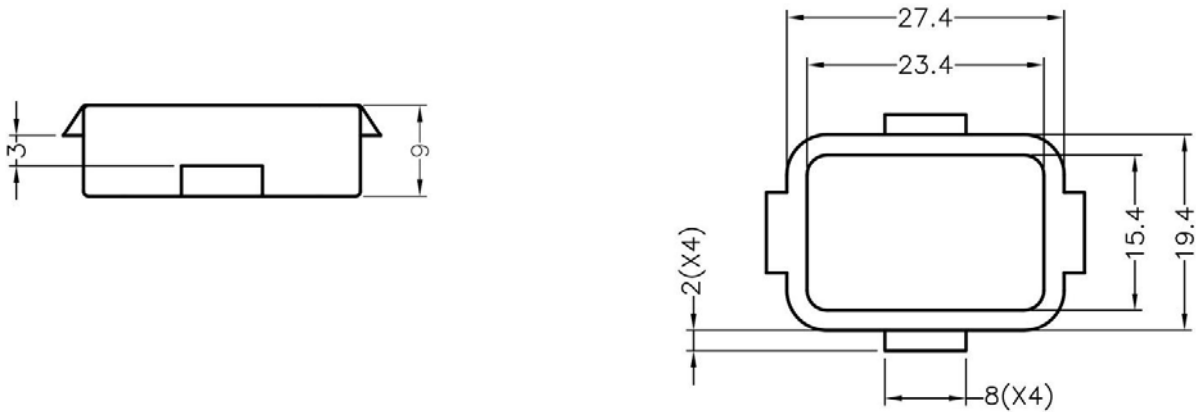
产品名称: 方型护线环

规格型号: LSW-35

- ◆ MATERIAL: NYLON 66(UL)
- ◆ FLAME CLASS: 94V-2, 94V-0
- ◆ COLOR: BLACK, NATURAL
- ◆ UNIT: mm

用途: 用于铁板间电线出入刮伤之保护, 不易脱落, 使用方便, 不占空间之优点。

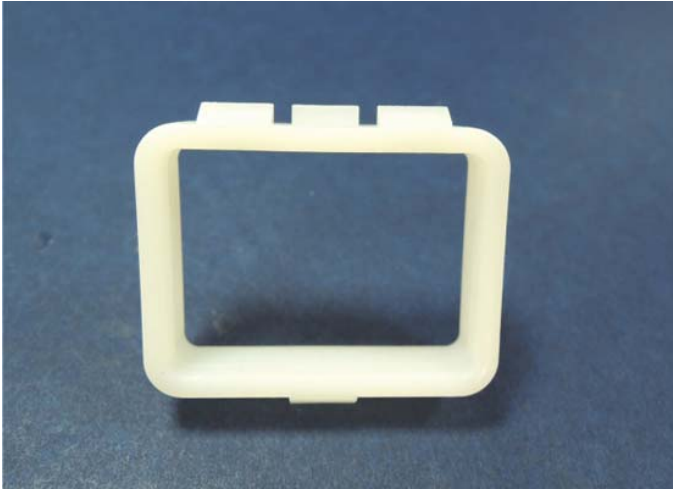
LSW-35 结构图



PART NO	PACKAGE
LSW-35	1000

南京诺金电气有限公司

Nanjing Nowking Electric Co., Ltd



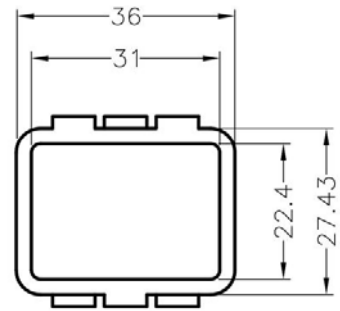
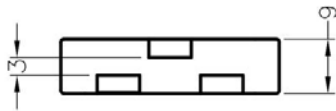
产品名称: 方型护线环

规格型号: LSW-36

- ◆ MATERIAL: NYLON 66(UL)
- ◆ FLAME CLASS: 94V-2, 94V-0
- ◆ COLOR: BLACK, NATURAL
- ◆ UNIT: mm

用途: 用于铁板间电线出入刮伤之保护, 不易脱落, 使用方便, 不占空间之优点。

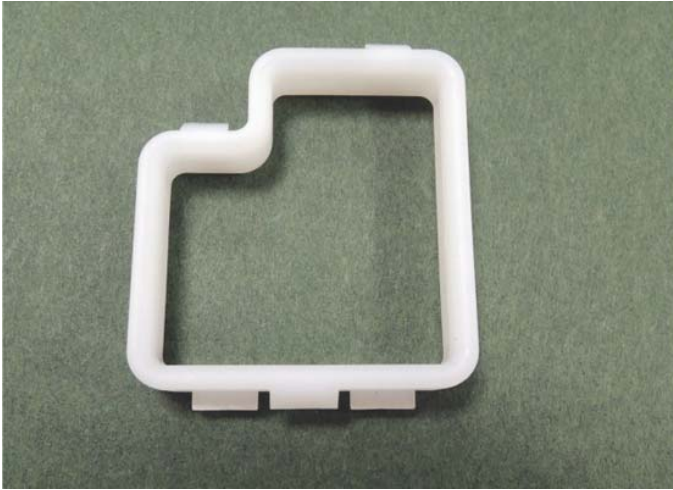
LSW-36 结构图



PART NO	PACKAGE
LSW-36	1000

南京诺金电气有限公司

Nanjing Nowking Electric Co., Ltd



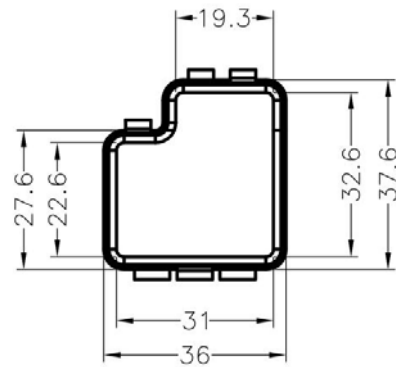
产品名称: 方型护线环

规格型号: LSW-37

- ◆ MATERIAL: NYLON 66(UL)
- ◆ FLAME CLASS: 94V-2, 94V-0
- ◆ COLOR: BLACK, NATURAL
- ◆ UNIT: mm

用途: 用于铁板间电线出入刮伤之保护, 不易脱落, 使用方便, 不占空间之优点。

LSW-37 结构图



PART NO	PACKAGE
LSW-37	1000

南京诺金电气有限公司

Nanjing Nowking Electric Co., Ltd



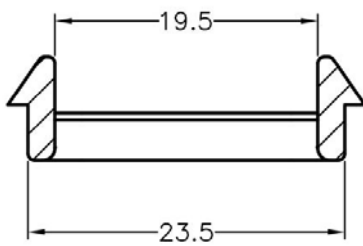
产品名称：方型护线环

规格型号：LSW-38

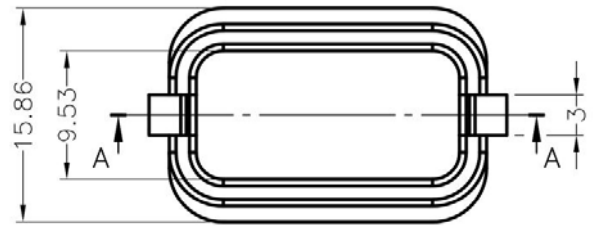
- ◆ MATERIAL: NYLON 66(UL)
- ◆ FLAME CLASS: 94V-2, 94V-0
- ◆ COLOR: BLACK, NATURAL
- ◆ UNIT: mm

用途：用于铁板间电线出入刮伤之保护，不易脱落，使用方便，不占空间之优点。

LSW-38 结构图



SECTION A-A



PART NO	PACKAGE
LSW-38	1000

南京诺金电气有限公司

Nanjing Nowking Electric Co., Ltd



产品名称：方型护线环

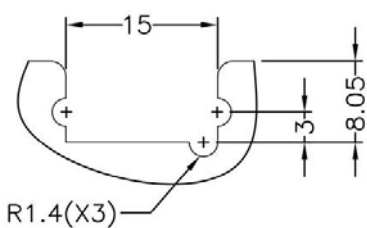
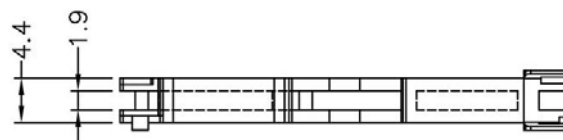
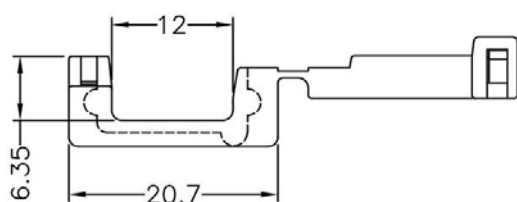
规格型号：LSW-39

- ◆ MATERIAL: NYLON 66(UL)
- ◆ FLAME CLASS: 94V-2, 94V-0
- ◆ COLOR: BLACK, NATURAL
- ◆ UNIT: mm

用途：用于机壳的电线出线口，保护电线不受机壳刮伤，装配容易。

1. 内缩为正常现象
2. 所有尺寸量测皆不含进胶口, 胶口凸出 1.2mm 之内.
3. 可使用同等材质

LSW-39 结构图



RECOMMEND MOUNTING HOLE
RECOMMEND THICKNESS: 1.5mm

PART NO	PACKAGE
LSW-39	1000

南京诺金电气有限公司

Nanjing Nowking Electric Co., Ltd



产品名称: 方型护线环

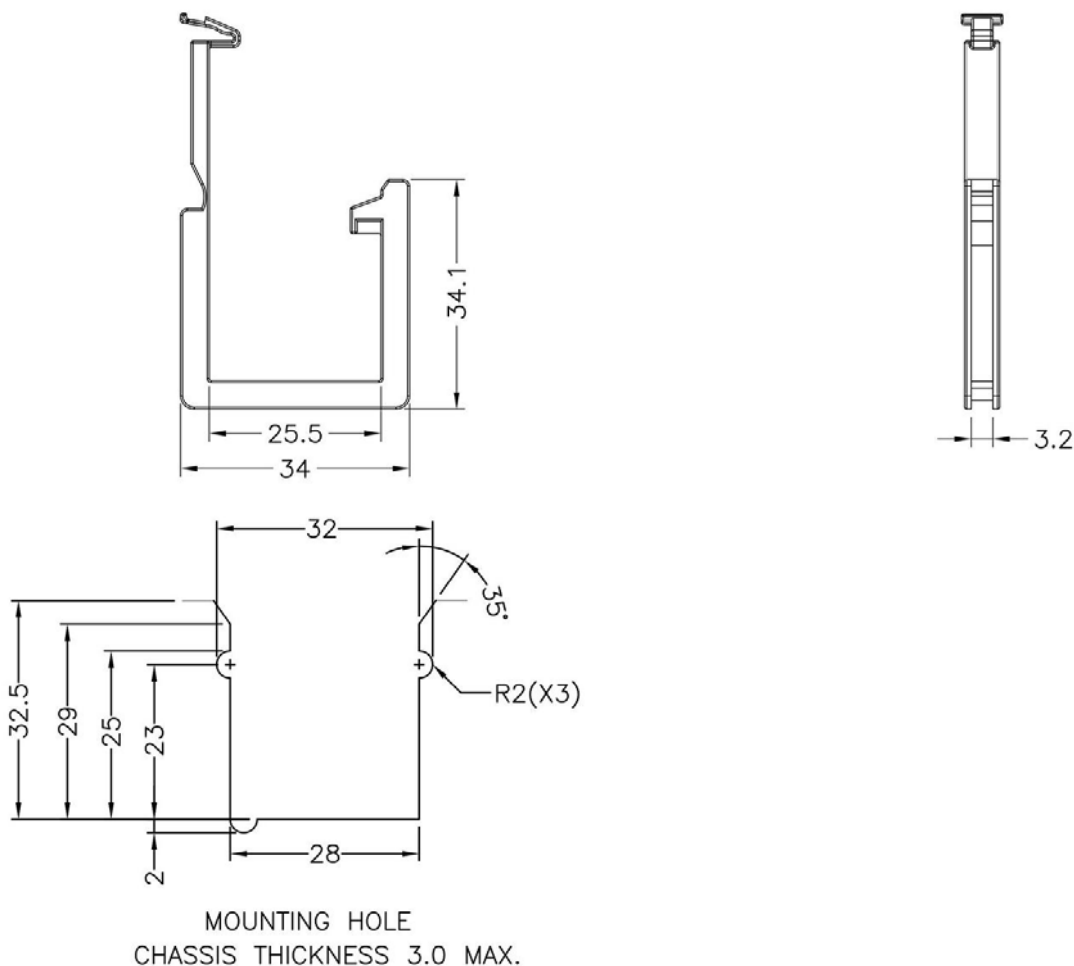
规格型号: LSW-40

- ◆ MATERIAL: NYLON 66(UL)
- ◆ FLAME CLASS: 94V-2, 94V-0
- ◆ COLOR: BLACK, NATURAL
- ◆ UNIT: mm

用途: 用于铁板间电线出入刮伤之保护, 不易脱落, 使用方便, 不占空间之优点。

- 1 内缩为正常现象
- 2 所有尺寸量测皆不含进胶口, 胶口凸出 1.2mm 之内.
- 3 可使用同等材质

LSW-40 结构图



PART NO	PACKAGE
LSW-40	1000

南京诺金电气有限公司

Nanjing Nowking Electric Co., Ltd



产品名称：方型护线环

规格型号：LSW-41

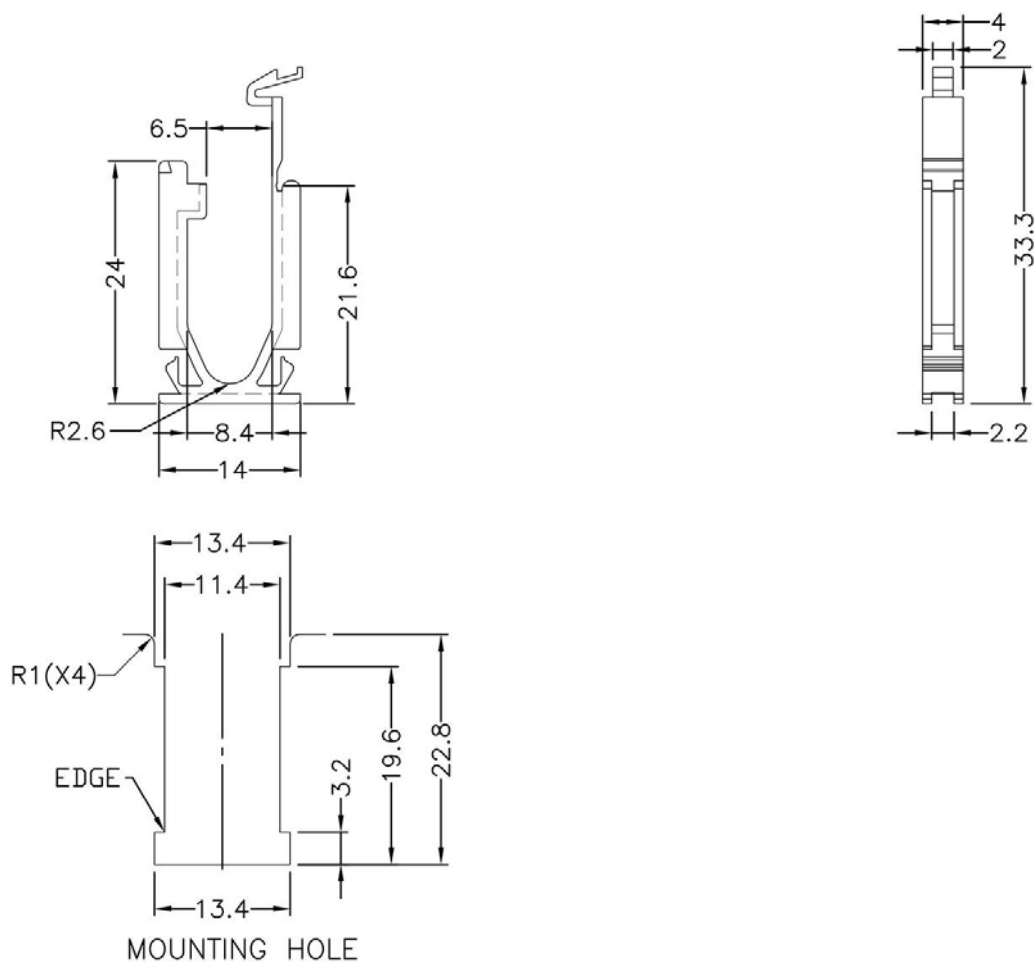
- ◆ MATERIAL: NYLON 66(UL)
- ◆ FLAME CLASS: 94V-2, 94V-0
- ◆ COLOR: BLACK, NATURAL
- ◆ UNIT: mm

用途：用于铁板间电线出入刮伤之保护，不易脱落，使用方便，不占空间之优点。

1 所有尺寸量测皆不含进胶口，胶口凸出 1.2mm 之内。

2 可使用同等材质

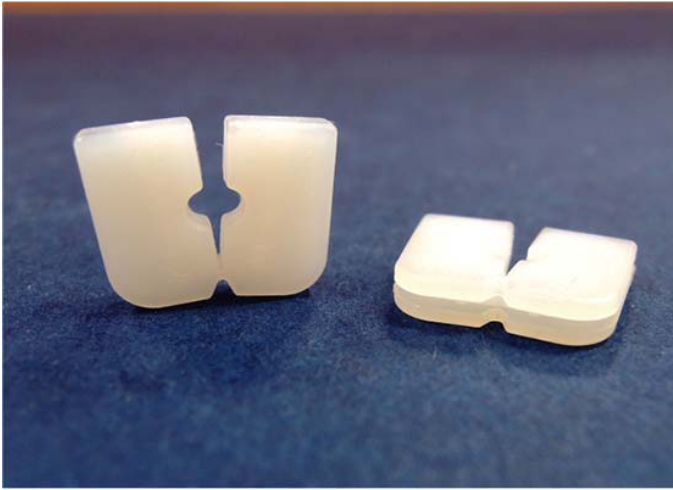
LSW-41 结构图



PART NO	PACKAGE
LSW-41	500

南京诺金电气有限公司

Nanjing Nowking Electric Co., Ltd



产品名称: 方型护线环

规格型号: LSW-42

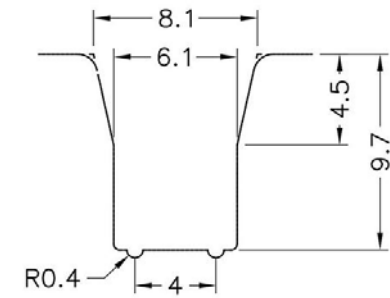
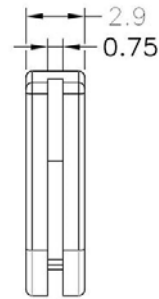
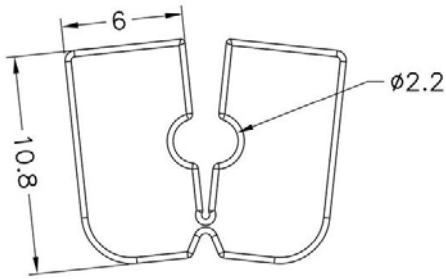
- ◆ MATERIAL: NYLON 66(UL)
- ◆ FLAME CLASS: 94V-2, 94V-0
- ◆ COLOR: BLACK, NATURAL
- ◆ UNIT: mm

用途: 用于机壳的电线出线口, 保护电线不受机壳刮伤, 装配容易。

1 所有尺寸量测皆不含进胶口, 胶口凸出 1.2mm 之内.

2 可使用同等材质

LSW-42 结构图



MOUNTING HOLE
CHASSIS THICKNESS 0.6

PART NO	PACKAGE
LSW-42	1000

南京诺金电气有限公司

Nanjing Nowking Electric Co., Ltd



产品名称：方型护线环

规格型号：LSW-43

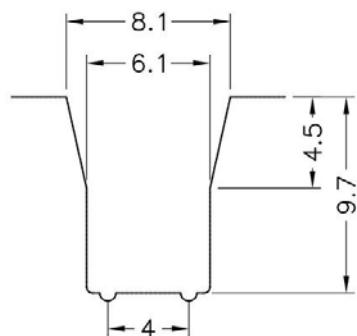
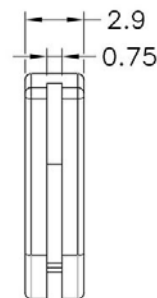
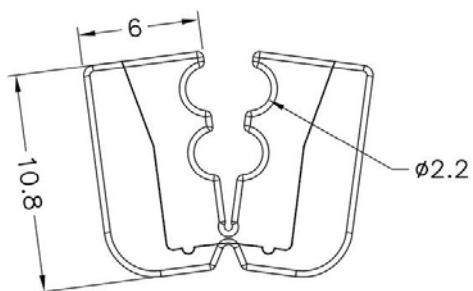
- ◆ MATERIAL: NYLON 66(UL)
- ◆ FLAME CLASS: 94V-2, 94V-0
- ◆ COLOR: BLACK, NATURAL
- ◆ UNIT: mm

用途：用于机壳的电线出线口，保护电线不受机壳刮伤，装配容易。

1 所有尺寸量测皆不含进胶口, 胶口凸出 1.2mm 之内.

2 可使用同等材质

LSW-43 结构图

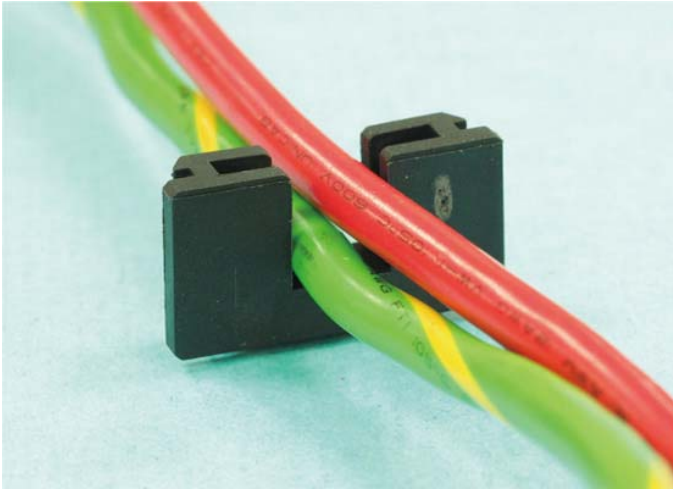


MOUNTING HOLE
CHASSIS THICKNESS 0.6

PART NO	PACKAGE
LSW-43	1000

南京诺金电气有限公司

Nanjing Nowking Electric Co., Ltd



产品名称：方型护线环

规格型号：LSW-44

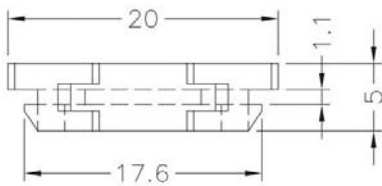
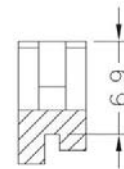
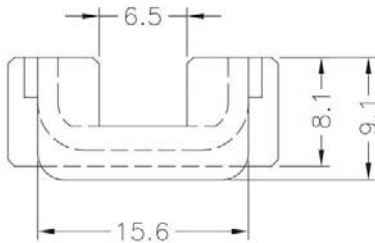
- ◆ MATERIAL: NYLON 66(UL)
- ◆ FLAME CLASS: 94V-2, 94V-0
- ◆ COLOR: BLACK, NATURAL
- ◆ UNIT: mm

用途：用于铁板间电线出入刮伤之保护，不易脱落，使用方便，不占空间之优点。

1 所有尺寸量测皆不含进胶口, 胶口凸出 1.2mm 之内.

2 可使用同等材质

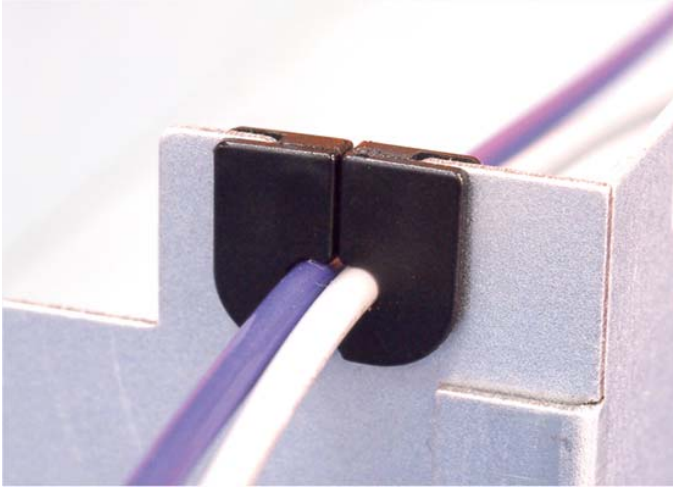
LSW-44 结构图



PART NO	PACKAGE
LSW-44	1000

南京诺金电气有限公司

Nanjing Nowking Electric Co., Ltd



产品名称: 方型护线环

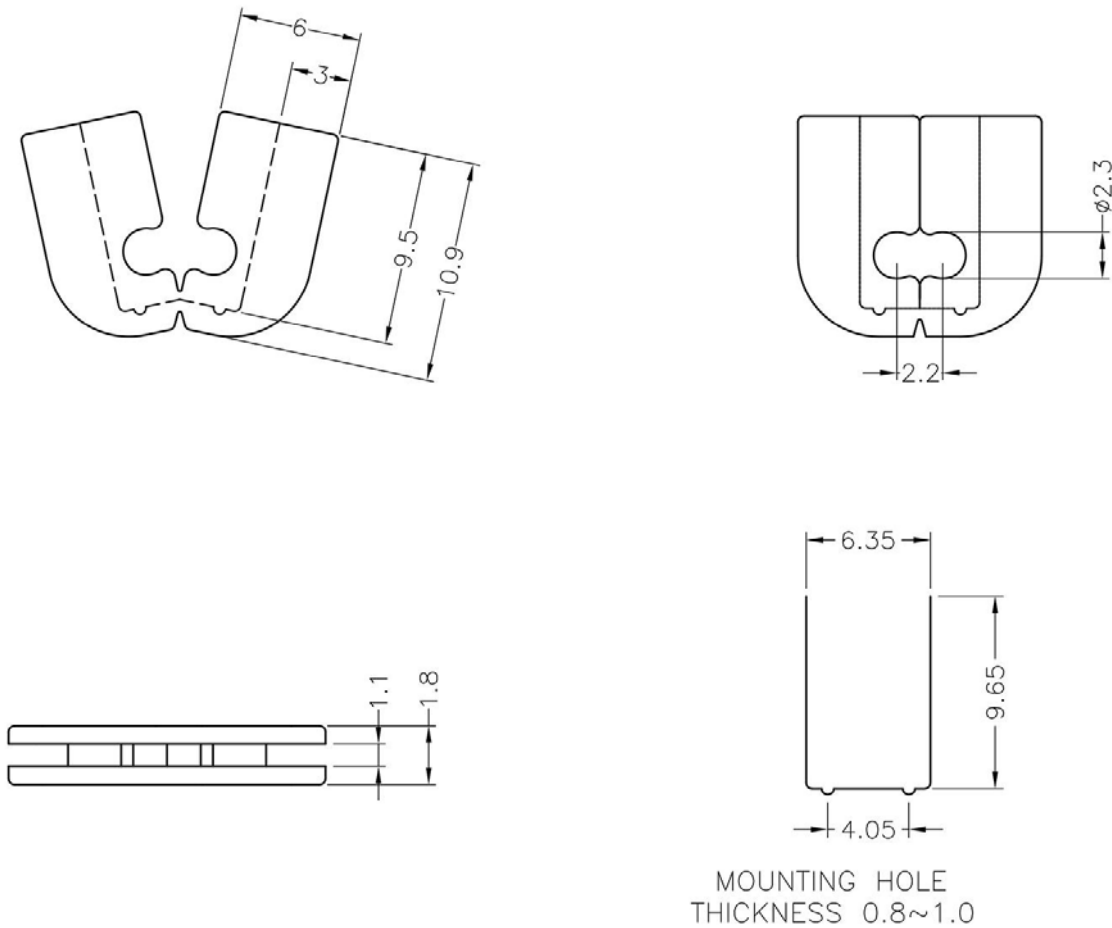
规格型号: LSW-45

- ◆ MATERIAL: NYLON 66(UL)
- ◆ FLAME CLASS: 94V-2, 94V-0
- ◆ COLOR: BLACK, NATURAL
- ◆ UNIT: mm

用途: 用于机壳的电线出线口, 保护电线不受机壳刮伤, 装配容易。

- 1 内缩为正常现象
- 2 可使用同等材质

LSW-45 结构图



PART NO	PACKAGE
LSW-45	1000

南京诺金电气有限公司

Nanjing Nowking Electric Co., Ltd



产品名称：方型护线环

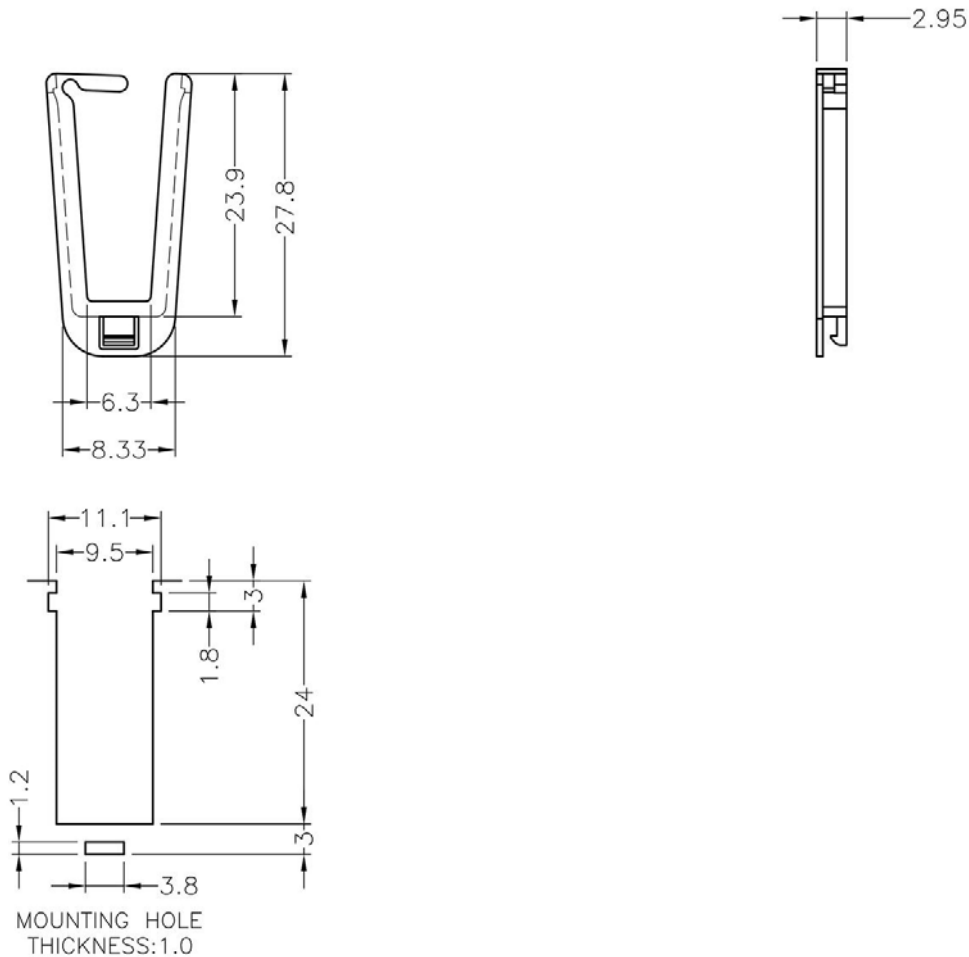
规格型号：LSW-46

- ◆ MATERIAL: NYLON 66(UL)
- ◆ FLAME CLASS: 94V-2, 94V-0
- ◆ COLOR: BLACK, NATURAL
- ◆ UNIT: mm

用途：用于机壳的电线出线口，保护电线不受机壳刮伤，装配容易。

可使用同等材质

LSW-46 结构图



PART NO	PACKAGE
LSW-46	500